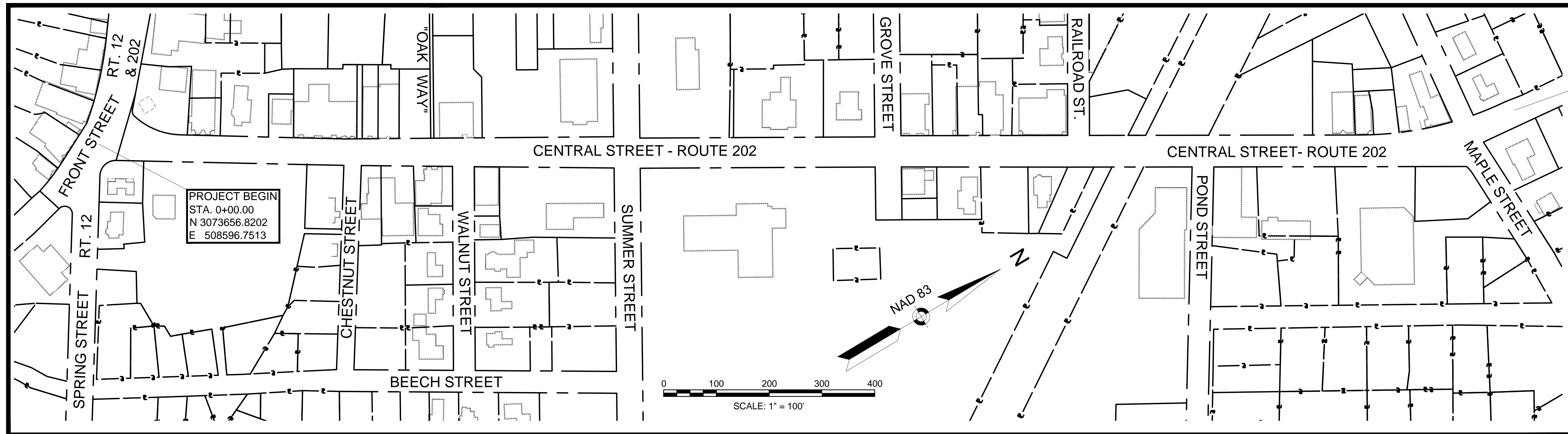


**WINCHENDON
CENTRAL STREET**

STATE	FED. AID PROJ. NO.	SHEET NO.	TOTAL SHEETS
MA	-	1	8

PROJECT FILE NO.

PROJECT END
STA. 27+00.00
N 3075993.2498
E 509916.9771



ABBREVIATIONS

BIT	BITUMINOUS	MBE	MIDDLE BACK EDGE
BM	BENCHMARK	MED	MEDIAN
BRK	BRICK	MH	MANHOLE
BC	BIT. CURB	MTL	METAL
CB/	CONC. BOUND	N/F	NOW OR FORMERLY
CC	CONC. CURB	NB	NORTHBOUND
CI	CURB INLET	OH	OVERHANG
CIP	CAST IRON PIPE	OHW	OVERHEAD WIRE
CL	CENTER LINE	PC	POINT OF CURVATURE
CMP	CORRUGATED METAL PIPE	PCC	POINT OF COMPOUND CURVATURE
CO	COUNTY	PED	PEDESTRIAN
CON	CONIFEROUS	PI	POINT OF INTERSECTION
CONC	CONCRETE	PL	PROPERTY LINE
CPP	CORRUGATED PLASTIC PIPE	PP	PRICK PUNCH
CSP	CORRUGATED STEEL PIPE	PRC	POINT OF REVERSE CURVATURE
CULV	CULVERT	PT	POINT OF TANGENCY
DEC	DECIDUOUS	PVC	POLYVINYL CHLORIDE PIPE
DH	DRILL HOLE	PVM/T	PAVEMENT
DI	DROP INLET	PWW	PAVED WATERWAY
DIP	DUCTILE IRON PIPE	PZ	PIEZOMETER
DMH	DRAIN MANHOLE	R	RADIUS OF CURVATURE
DSK	DISK	RC	REINFORCED CONCRETE
DYL	DOUBLE YELLOW LINE	RCP	REINFORCED CONCRETE PIPE
EB	EASTBOUND	RET	RETAINING
EL	ELEVATION	ROW	RIGHT OF WAY
EMH	ELECTRIC MANHOLE	RR	RAILROAD
EP	EDGE OF PAVEMENT	S.BD.	SOUTHBOUND
EPLP	ESCUTCHEON PIN IN LEAD PLUG	SB/	STONE BOUND
EX	EXISTING	SD	SUBDRAIN
FF	FINISH FLOOR	SHLD	SHOULDER
FGS	FLAGSTONE	SK	SKREW
FL	FLOWLINE	SMH	SEWER MANHOLE
FLDSTN	FIELDSTONE	SPK	SPIKE
GAR	GARAGE	STA	STATION
GC	GRANITE CURB	STN	STONE
GIP	GALVANIZED IRON PIPE	SW	SIDEWALK
GMH	GAS MANHOLE	SWL	SINGLE WHITE LINE
GRAN	GRANITE	SYL	SINGLE YELLOW LINE
GRAV	GRAVEL	T	TANGENT DISTANCE
GRD	GUARD	TAN	TANGENT
GRL	GUARDRAIL	TEMP	TEMPORARY
HDW	HEADWALL	TR	TOP OF RAIL
HYD	HYDRANT	TSC	TRAFFIC SIGNAL CONDUIT
INV	INVERT	TYP	TYPICAL
L	LENGTH OF CURVE	VAR	VARIABLE
LB	LEACHING BASIN	VCP	VITRIFIED CLAY PIPE
LC	LAND COURT	VL	VAULT
LCB	LAND COURT BOUND	WB	WESTBOUND
LCD	LAND COURT DISK	WCR	WHEELCHAIR RAMP
LP	LIGHT POLE	WD	WOOD
LPD	LIGHT POLE DOUBLE LIGHT	WIP	WROUGHT IRON PIPE
LSA	LANDSCAPED AREA		

<ul style="list-style-type: none"> ⊙ BF# BANK FLAG ⊙ BHL # BORE HOLE ⊙ BUSH ⊙ BM # BENCHMARK ⊙ BOUND (CONC. STONE, LAND COURT, ETC.) ⊙ CABLE MANHOLE ⊙ CB CATCH BASIN - SQUARE ⊙ CB CATCH BASIN - D-FRAME ⊙ CB CATCH BASIN - ROUND ⊙ DSK DISK (CA/T, USC&GS, LAND COURT, ETC.) ⊙ DH DRILL HOLE ⊙ DMH DRAIN MANHOLE ⊙ EHH ELECTRIC HANDHOLE ⊙ EM ELECTRIC METER ⊙ EMO ELECTRICAL OUTLET ⊙ FB FLASHING BEACON ⊙ FES FLARED END SECTION ⊙ FP FLAG POLE ⊙ GF GAS FILL ⊙ GG GAS GATE ⊙ GM GAS METER ⊙ GP GAS PUMP ⊙ GPM GAS MANHOLE ⊙ GPL GUY POLE ⊙ HEDGE ⊙ GUY WIRE ANCHOR ⊙ HTP HIGH TENSION POWER POLE ⊙ FH FIRE HYDRANT ⊙ IP/IR IRON PIPE/IRON ROD ⊙ IRRIGATION CONTROL BOX ⊙ LIGHT POLE 	<ul style="list-style-type: none"> ⊙ MAG MAG NAIL ⊙ MB MAIL BOX ⊙ MHB MASSACHUSETTS HIGHWAY BOUND ⊙ MW MONITORING WELL ⊙ OIL OIL FILL ⊙ OM OTHER MANHOLE ⊙ PB PULL BOX ⊙ PED PEDESTRIAN SIGNAL ⊙ PHOTO CONTROL - H & V ⊙ PIPE INLET / OUTLET ⊙ PK PK NAIL ⊙ PM PARKING METER ⊙ POST/BOL CIRCULAR POST/BOLLARD ⊙ POST SQUARE POST ⊙ RB REBAR/IRON PIN ⊙ RRS RAILROAD SPIKE ⊙ RRSR RAILROAD SIGNAL ⊙ RRSW RAILROAD SWITCH ⊙ SN STAKE AND NAIL ⊙ SP STAND PIPE ⊙ SMH SEWER MANHOLE ⊙ STM STEAM MANHOLE ⊙ STUMP ⊙ TRAFFIC CONTROL BOX ⊙ TCB TRAFFIC SIGNAL CONTROL CABINET ⊙ TFMR TELEPHONE MANHOLE ⊙ TRANSFORMER ⊙ TLRS TOWN LINE ROAD STONE ⊙ TPIT # TEST PIT ⊙ TRAVERSE LINE ⊙ TRAVERSE POINT ⊙ TREE 	<ul style="list-style-type: none"> ⊙ TS TRAFFIC SIGNAL ⊙ TS TRAFFIC SIGNAL MAST ARM/SPAN WIRE POLE ⊙ SIGN ⊙ SIGN - DOUBLE POST ⊙ UFB# UTILITY POLE W/ FIRE PULL BOX ⊙ ULT# UTILITY POLE W/ LIGHT ⊙ UPDL# UTILITY POLE W/ DOUBLE LIGHT ⊙ UPL# UTILITY POLE ⊙ VP VENT PIPE ⊙ WM WATER MANHOLE ⊙ WG WATER GATE ⊙ WM WATER METER ⊙ WSO WATER SHUTOFF ⊙ WELL WELL (POTABLE) ⊙ WF# WETLAND FLAG ⊙ X-CUT X-CUT
---	---	---

**NORTHEAST
SURVEY
CONSULTANTS**

116 PLEASANT ST., SUITE 302
P.O. BOX 189
EASTHAMPTON, MA 01027
(413) 203-5144

PREPARED BY:

REVISIONS

REV.	COMMENTS	DATE
0	SUBMITTED FOR REVIEW	07/12/2016

SCALE: 20 FEET TO THE INCH

FILE NAME: 16-021.MDOT.DWG	
FIELD BOOK NO: XXXX	
DRAWN BY: CJH	CHECKED BY: DFS
FIELD CHIEF: XXX	PARS. NO: XXXXXX

MASSACHUSETTS DEPARTMENT OF TRANSPORTATION
PLAN OF TOPOGRAPHIC SURVEY OF
CENTRAL STREET - ROUTE 202

IN THE TOWN OF
WINCHENDON
AS ORDERED BY
THE TOWN OF WINCHENDON
109 FRONT STREET, WINCHENDON, MA 01475

DATE: JULY 12, 2016 SHEET 1 OF 8

WINCHENDON
CENTRAL STREET

STATE	FED. AID PROJ. NO.	SHEET NO.	TOTAL SHEETS
MA	-	2	8

PROJECT FILE NO.

SURVEY BASEPLAN

INVERT TABLE

CATCH BASINS:

CB1066
RIM=988.01'
5" VC IN (FROM N)=986.21'
5" VC IN (FROM E)=986.11'
6" VC OUT (TO E)=985.41'
SUMP=984.21'
EDGE LOCATED/UNDER CAR

CB1647
RIM=984.73'
8" VC OUT (TO N)=982.18'
SUMP=981.43'

CB1764
RIM=992.56'
6" PVC IN (FROM W)=990.32'
5" VC IN (FROM S)=990.56'
5" VC OUT (TO DMH2417)=990.11'
SUMP=988.11'

CB1837
RIM=984.23'
WATER LEVEL=982.18'
SUMP=981.68'
*VEHICLE PARKED/NO VISIBLE PIPES

CB1958
RIM=978.24'
8" VC OUT (TO NW)=976.84'
WATER=976.74'
SUMP=975.74'

CB2218
RIM=975.25'
10" VC OUT (TO N)=972.95'
SUMP=971.85'

CB2580
RIM=977.44'
2" PVC IN (FROM N)=976.44'
8" CMP OUT (TO CB2648)=975.44'
SUMP=975.44'

CB2648
RIM=975.38'
8" CMP IN (FROM CB2580)=973.58'
6" VC OUT (TO NE)=973.28'
SUMP=973.28'

CB2801
RIM=975.14'
6" VC OUT (TO E)=972.84'
SUMP=972.48'

CB2928
RIM=974.69'
6" VC OUT (TO S)=972.89'
SUMP=971.69'

CB3094
RIM=973.40'
6" VC OUT (TO W)=970.95'
SUMP=970.40'

CB3167
RIM=975.08'
6" VC OUT (TO S)=972.78'
SUMP=971.68'

CB3328
RIM=973.74'
6" VC IN (FROM W)=971.64'
8" VC OUT (TO NE)=971.54'
SUMP=970.74'

CB3583
RIM=972.56'
12" CMP OUT (TO N)=969.46'
SUMP=968.66'

CB3661
RIM=973.00'
10" RCP OUT (TO S)=970.10'
SUMP=969.60'

CB3758
RIM=973.65'
12" PVC OUT (TO DMH3757)=970.35'
SUMP=969.95'

CB3759
RIM=973.93'
12" CMP OUT (TO S)=969.93'
SUMP=969.23'

STORM DRAIN MANHOLES:

CB3800
RIM=972.73'
12" CMP OUT (TO DMH3799)=969.48'
SUMP=968.83'

CB3839
RIM=972.12'
12" CMP OUT (TO NE)=969.52'
SUMP=969.15'

CB3841
RIM=971.94'
12" CMP OUT (TODMH3840)=969.09'
SUMP=967.44'

CB4185
RIM=975.40'
SUMP (OPEN TO DMH4186)=974.05'

CB4460
RIM=973.64'
30" CMP OUT (TO S)=969.34'
30" CMP IN (FROM DMH4461)=969.34'

CB4485
RIM=973.95'
12" CMP IN (FROM N)=970.70'
12" PVC OUT (TO DMH4461)=970.60'

CB4540
RIM=975.07'
8" PVC OUT (TO DMH4187)=972.37'
SUMP=972.37'

CB4946
RIM=986.86'
12" HDPE OUT (TO SE)=983.86'
SUMP=980.86'

CB7040
RIM=981.86'
12" PVC IN (FROM DMH7072)=979.46'
12" RCP OUT (TO W)=978.56'

CB7142
RIM=985.52'
8" PVC OUT (TO DMH7072)=982.82'

CB7249
RIM=987.00'
6" AC OUT (TO N)=985.40'
SUMP=984.10'

CB7376
RIM=987.92'
10" VC OUT (TO S)=985.52'
SUMP=985.52'

CB7585
RIM=986.63'
SUMP=982.13'
NO VISIBLE PIPES

CB7601
RIM=986.02'
2'X2' STONE BOX CULVERT=981.32'

CB7665
RIM=987.20'
10" PIPE OUT (TO W/CENTRAL ST.)=984.90'

CB7817
RIM=998.45'
6" PVC OUT (TO DMH7856)=995.15'

CB8076
RIM=1000.28'
(2) 6" CPP OUT (TO DMH7861)=997.18'

CB8439
RIM=1007.56'
12" RCP OUT (TO DMH8440)=1003.76'
SUMP=1003.76'

CB8500
RIM=1007.17'
12" RCP OUT (TO DMH8440)=1003.67'
SUMP=1007.17'

CB8902
RIM=999.06'
12" RCP OUT (TO DMH7862)=995.91'

CB9059
RIM=975.21'
8" UNK. OUT (TO S)=972.71'
SUMP=973.21'

STORM DRAIN MANHOLES:

DMH2410
RIM=987.85'
6" (S)=980.65'
6" (N)=980.65'

DMH2417
RIM=985.73'
5" CLAY IN (FROM CB1764)=982.18'
7" CLAY OUT (TO E/SPRING ST)=982.01'
SUMP=982.03'

DMH3757
RIM=973.65'
12" CMP IN (FROM S)=970.05'
42" CMP IN (FROM W)=966.65'
12" PVC IN (FROM N)=970.50'
48" CMP OUT (TO DMH3840)=966.65'

DMH3799
RIM=972.89'
8" VC IN (FROM W)=969.09'
6" AC IN (FROM DMH4187)=969.89'
12" CMP IN (FROM CB3800)=969.34'
15" RCP OUT (TO S)=967.99'
SUMP=966.59'

DMH3840
RIM=972.13'
48" CMP IN (FROM DMH3757)=966.58'
12" CMP IN (FROM CB3841)=968.83'
48" CMP OUT (TO E)=966.58'

DMH3875
RIM=974.83'
4'X4' CONC. BOX CULVERT
IN (FROM DMH4084)=964.63'
OUT (TO S)=964.63'
12" IN (FROM BLDG)=964.63'

DMH4084
RIM=975.51'
4'X4' CONC BOX CULVERT
IN (FROM N)=969.52'
OUT (TO S)=969.52'

DMH4186
RIM=975.62'
8" CMP OUT (TO DMH4187)=972.52'
SUMP=972.07'

DMH4187
RIM=975.60'
8" PVC IN (FROM CB4540)=971.85'
8" CMP IN (FROM DMH4186)=972.10'
8" UNK. OUT (TO DMH3799)=971.65'

SANITARY SEWER MANHOLES:

DMH4461
RIM=974.17'
36" RCP IN (FROM W)=969.52'
12" PLASTIC IN (FROM CB4485)=969.87'
30" CMP OUT (TO CB4460)=969.32'
SUMP=968.77'

DMH7072
RIM=984.02'
8" PVC IN (FROM N)=981.32'
8" PVC IN (FROM CB7142)=981.32'
6" AC IN (FROM E/CENTRAL ST.)=981.37'
12" PVC OUT (TO CB7040)=980.92'

DMH7304
RIM=987.56'
15" RCP IN (FROM DMH7862)=983.06'
18" CMP IN (FROM CB7585)=982.21'
24" CMP OUT (TO NW)=982.06'

DMH7855
RIM=999.78'
30" CPP IN (FROM SE)=994.53'
12" CPP OUT (TO DMH7856)=994.48'

DMH7856
RIM=999.56'
12" CPP IN (FROM DMH7855)=994.66'
4" PVC IN (FROM S)=994.66'
6" PVC IN (FROM CB7817)=994.96'
12" RCP OUT (DMH7861)=994.66'

DMH7861
RIM=998.85'
PIPE IN (FROM CB8076)=995.25'
15" HDPE IN (FROM SE)=994.65'
15" HDPE OUT (TO DMH7862)=994.65'

DMH7862
RIM=998.98'
12" RCP IN (FROM CB8902)=995.03'
12" RCP IN (FROM DMH8126)=994.58'
15" RCP IN (FROM DMH7861)=994.48'
15" RCP OUT (TO DMH7304)=994.38'

DMH8126
RIM=1004.26'
12" RCP IN (FROM DMH8440)=1000.06'
12" RCP OUT (TO DMH7862)=999.86'

DMH8440
RIM=1007.64'
12" RCP IN (FROM CB8500)=1003.09'
12" RCP IN (FROM N)=1003.09'
12" RCP IN (FROM CB8439)=1003.64'
12" RCP OUT (TO DMH8126)=1003.04'

SANITARY SEWER MANHOLES:

SMH2095
RIM=976.32'
UNK. PIPE OUT (TO E)=969.52'
NO OTHER PIPES VISIBLE
STANDING SEWAGE

SMH2410
RIM=987.85'
6" IN (FROM S)=980.65'
6" OUT (TO SMH2444)=980.65'

SMH2444
RIM=980.00'
6" VC IN (FROM MH2410)=973.15'
6" VC OUT (TO SMH2750)=973.15'

SMH2750
RIM=975.74'
6" VC IN (FROM SMH2444)=968.54'
6" VC OUT (TO SMH3756)=968.54'

SMH2914
RIM=975.96'
6" VC OUT (TO SMH8699)=969.01'

SMH3756
RIM=974.35'
8" VC IN (FROM S)=966.90'
9" VC IN (FROM S)=965.80'
8" PVC IN (FROM SMH3760)=968.80'
9" VC IN (FROM SMH3782)=965.65'
8" VC OUT (TO SMH3840)=965.50'

SMH3760
RIM=973.99'
6" PVC IN (FROM SW)=969.69'
8" PVC IN (FROM W)=969.59'
8" PVC OUT (TO SMH3756)=969.49'

SMH3782
RIM=973.23'
9" VC IN (FROM SMH4200)=966.13'
6" VC IN (FROM E)=966.18'
9" VC OUT (TO SMH3756)=966.13'

SMH4200
RIM=975.46'
8" VC IN (FROM W/GROVE ST)=966.86'
6" VC IN (FROM N)=967.26'
6" VC IN (FROM N)=968.91'
9" VC OUT (TO SMH3782)=966.76'

SMH4639
RIM=982.21'
8" PVC IN (FROM NW)=977.20'
6" VC IN (FROM N)=975.56'
6" VC OUT (TO SMH4200)=975.56'

SANITARY SEWER MANHOLES:

SMH7302
RIM=988.00'
9" VC IN (FROM NW)=981.25'
6" UNK. IN (FROM SMH8129)=981.30'
9" UNK. (TO SMH7304)=981.15'

SMH7305
RIM=987.54'
9" VC IN (FROM SMH7302)=981.09'
9" VC OUT (TO E)=981.04'

SMH8129
RIM=997.55'
6" VC IN (FROM SMH8138)=991.15'
6" VC OUT (SMH7302)=991.15'

SMH8138
RIM=1006.08'
6" VC IN (FROM N)=999.43'
6" VC OUT (TO SMH8129)=999.43'

SMH8246
RIM=1004.91'
SUMP=998.81'
NO VISIBLE PIPES

SMH8561
RIM=1002.64'
UNK. PIPE OUT (TO W)=996.64'
*FILLED WITH DEBRIS

SMH8687
RIM=974.42'
6" VC IN (FROM SMH2914)=966.12'
4" VC IN (FROM NW)=966.72'
4" VC IN (FROM NW)=969.82'
6" PIPE OUT (TO SMH8701)=966.12'

SMH8699
RIM=969.80'
6" VC IN (FROM SMH2914)=964.50'
6" VC OUT (TO S)=964.50'

SMH8701
RIM=969.63'
6" VC IN (FROM W)=954.53'
6" VC IN (FROM W)=962.83'
15" VC IN (FROM N)=954.03'
4" CAST IN (FROM NE)=965.53'
15" OUT (TO S)=953.93'

NORTHEAST SURVEY CONSULTANTS
116 PLEASANT ST. SUITE 302
P.O. BOX 109
EASTHAMPTON, MA 01027
(413) 203-5144

PREPARED BY:

REVISIONS		
REV.	COMMENTS	DATE
0	SUBMITTED FOR REVIEW	07/12/2016

SCALE: N/A

FILE NAME: 16-021.MDOT.DWG

FIELD BOOK NO: XXXX

DRAWN BY: CJH CHECKED BY: DFS

FIELD CHIEF: JD PARS. NO: XXXXXX

DATE: JULY 12, 2016

SHEET 2 OF 8

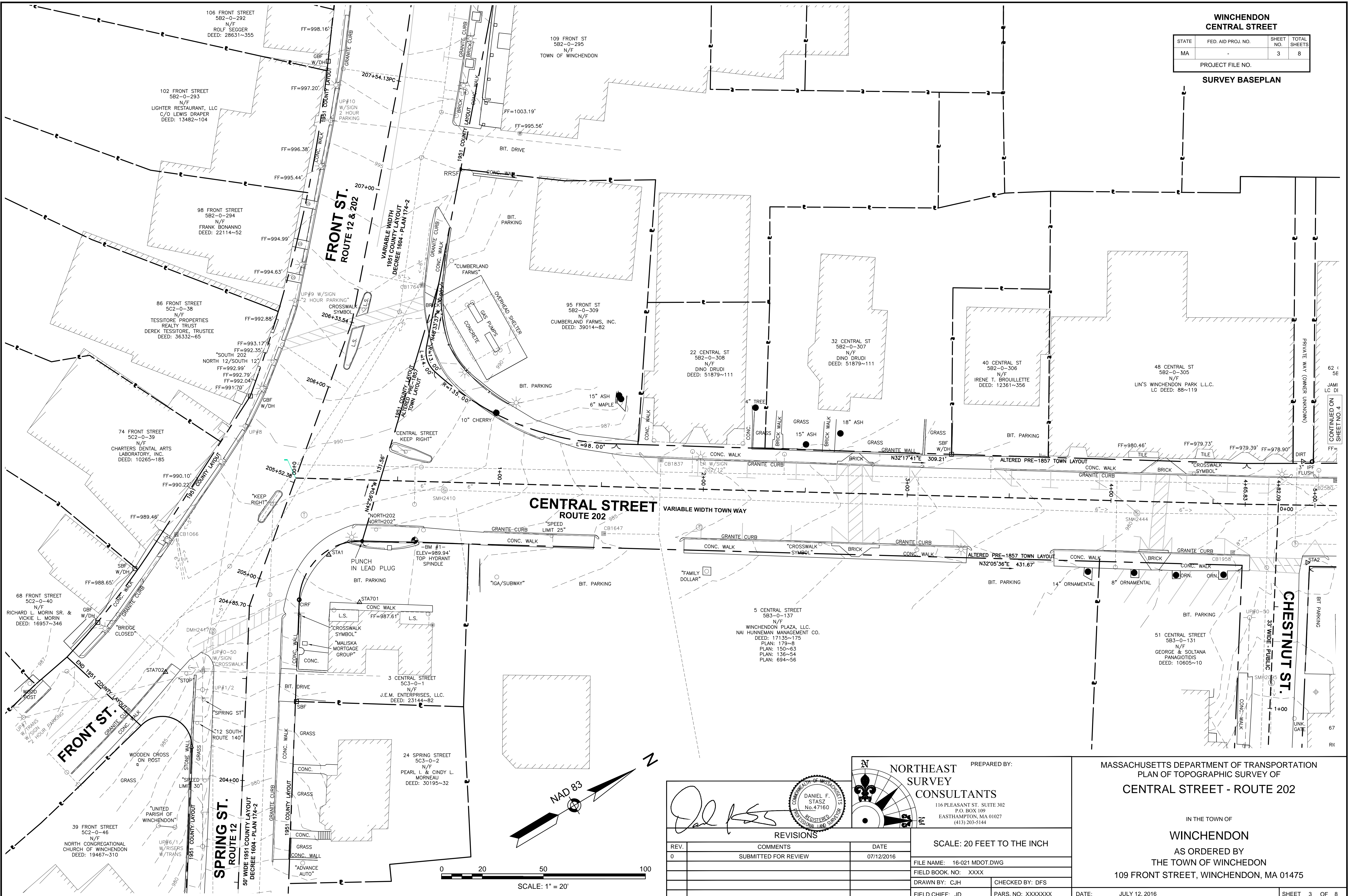
MASSACHUSETTS DEPARTMENT OF TRANSPORTATION
PLAN OF TOPOGRAPHIC SURVEY OF
CENTRAL STREET - ROUTE 202

IN THE TOWN OF
WINCHENDON
AS ORDERED BY
THE TOWN OF WINCHENDON
109 FRONT STREET, WINCHENDON, MA 01475

WINCHENDON
CENTRAL STREET

STATE	FED. AID PROJ. NO.	SHEET NO.	TOTAL SHEETS
MA	-	3	8
PROJECT FILE NO.			

SURVEY BASEPLAN



CONTINUED ON
SHEET NO. 4

67

66

65

64

63

62

NORTHEAST SURVEY CONSULTANTS
 116 PLEASANT ST. SUITE 302
 P.O. BOX 109
 EASTHAMPTON, MA 01027
 (413) 203-5144

PREPARED BY: [Signature]

REVISIONS

REV.	COMMENTS	DATE
0	SUBMITTED FOR REVIEW	07/12/2016

SCALE: 20 FEET TO THE INCH

FILE NAME: 16-021 MDOT.DWG
 FIELD BOOK NO: XXXX
 DRAWN BY: CJH
 CHECKED BY: DFS
 FIELD CHIEF: JD
 PARS. NO: XXXXXX

MASSACHUSETTS DEPARTMENT OF TRANSPORTATION
 PLAN OF TOPOGRAPHIC SURVEY OF
CENTRAL STREET - ROUTE 202

IN THE TOWN OF
WINCHENDON
 AS ORDERED BY
 THE TOWN OF WINCHENDON
 109 FRONT STREET, WINCHENDON, MA 01475

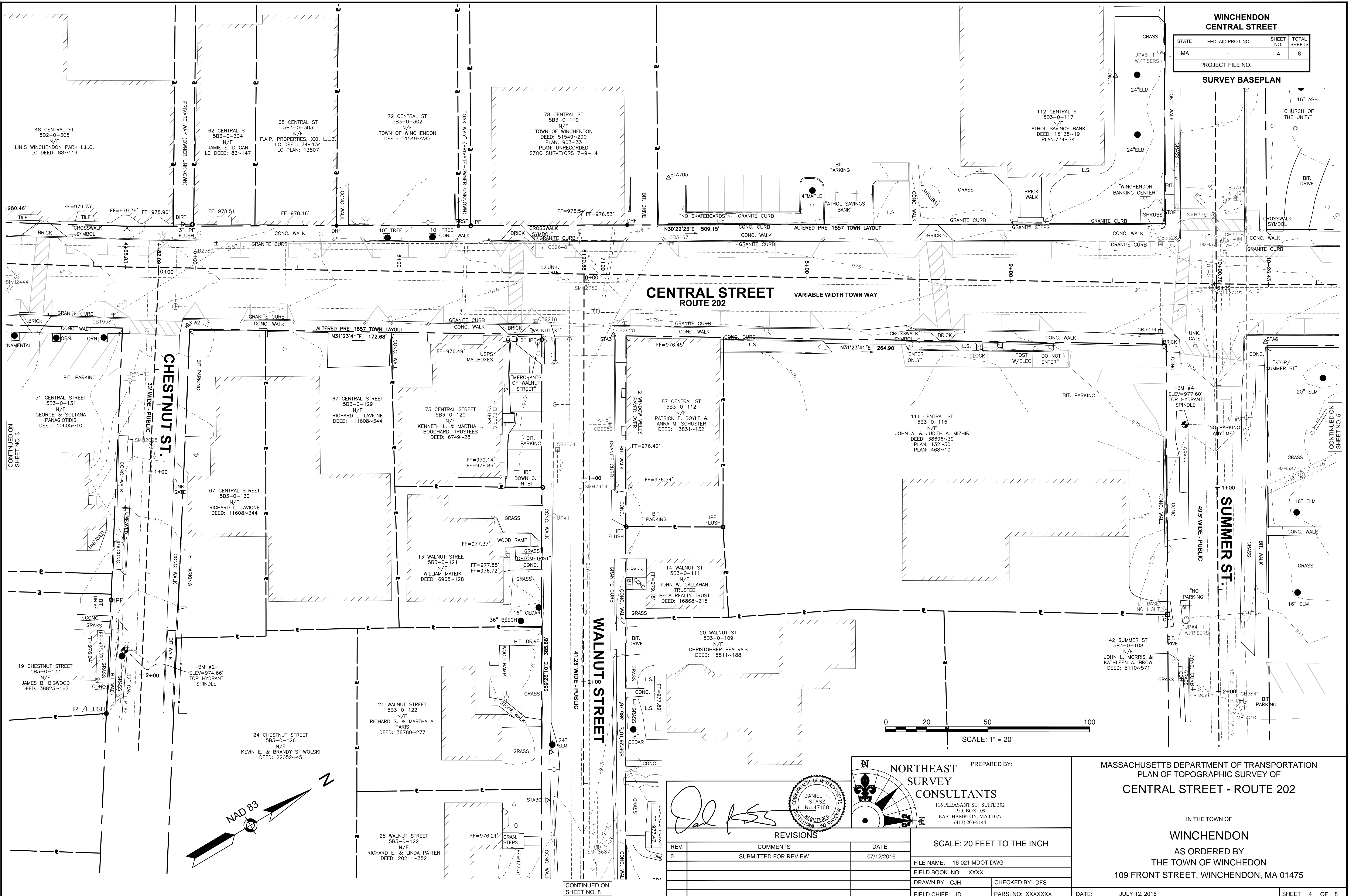
DATE: JULY 12, 2016
 SHEET 3 OF 8

WINCHENDON CENTRAL STREET

STATE	FED. AID PROJ. NO.	SHEET NO.	TOTAL SHEETS
MA		4	8

PROJECT FILE NO.

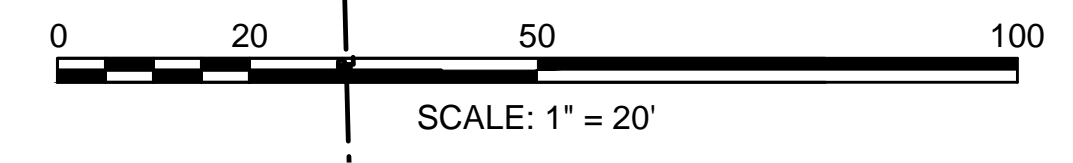
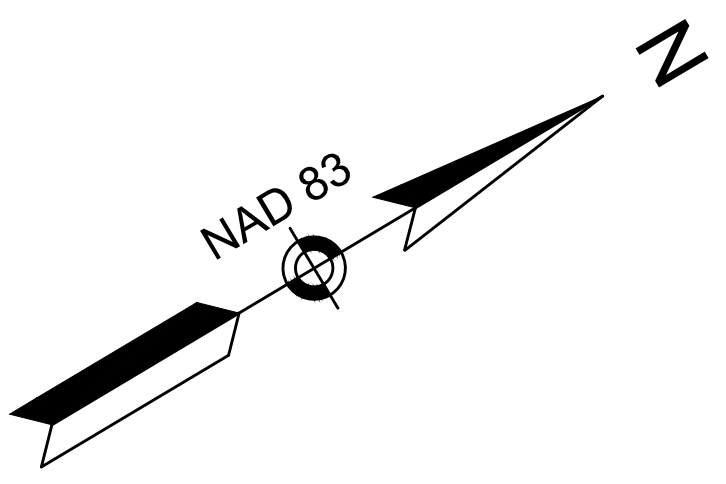
SURVEY BASEPLAN



CONTINUED ON SHEET NO. 3

CONTINUED ON SHEET NO. 5

CONTINUED ON SHEET NO. 8



**NORTHEAST
SURVEY
CONSULTANTS**

116 PLEASANT ST. SUITE 302
P.O. BOX 109
EASTHAMPTON, MA 01027
(413) 203-5144

PREPARED BY:

DANIEL F. STASZ
No. 47160

REV.	COMMENTS	DATE
0	SUBMITTED FOR REVIEW	07/12/2016

SCALE: 20 FEET TO THE INCH

FILE NAME: 16-021.MDOT.DWG

FIELD BOOK NO: XXXX

DRAWN BY: CJH CHECKED BY: DFS

FIELD CHIEF: JD PARS. NO: XXXXXX

DATE: JULY 12, 2016

SHEET 4 OF 8

MASSACHUSETTS DEPARTMENT OF TRANSPORTATION
PLAN OF TOPOGRAPHIC SURVEY OF
CENTRAL STREET - ROUTE 202

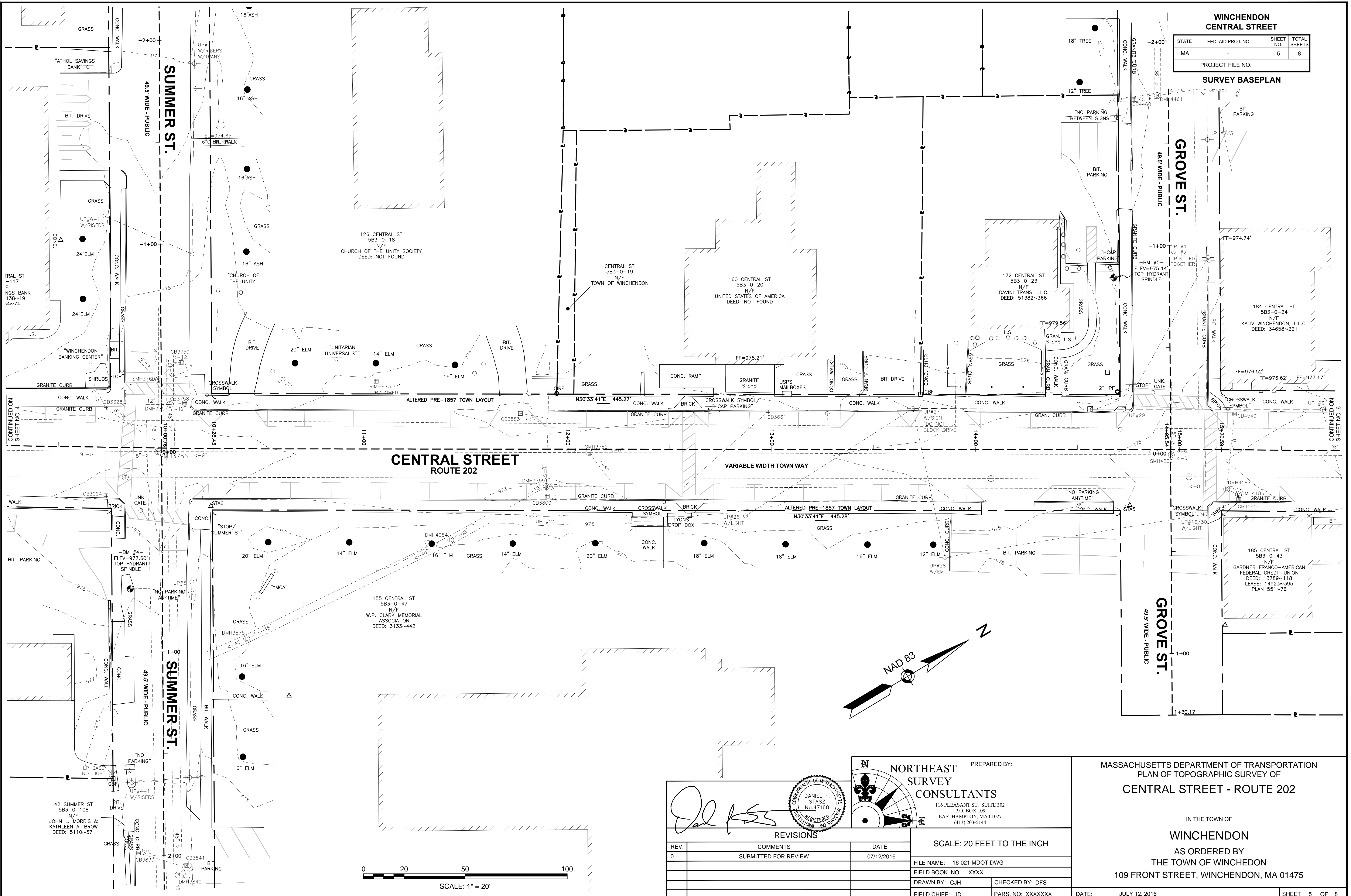
IN THE TOWN OF
WINCHENDON
AS ORDERED BY
THE TOWN OF WINCHENDON
109 FRONT STREET, WINCHENDON, MA 01475

**WINCHENDON
CENTRAL STREET**

STATE	FED. AID PROJ. NO.	SHEET NO.	TOTAL SHEETS
MA		5	8

PROJECT FILE NO.

SURVEY BASEPLAN



NORTHEAST SURVEY CONSULTANTS
 116 PLEASANT ST. SUITE 302
 P.O. BOX 109
 EASTHAMPTON, MA 01027
 (413) 203-5144

PREPARED BY:

Daniel F. Stasz

REVISIONS

REV.	COMMENTS	DATE
0	SUBMITTED FOR REVIEW	07/12/2016

SCALE: 20 FEET TO THE INCH

FILE NAME:	16-021 MDOT.DWG
FIELD BOOK NO.:	XXXX
DRAWN BY:	CJH
CHECKED BY:	DFS
FIELD CHIEF:	JD
PARS. NO.:	XXXXXXX

MASSACHUSETTS DEPARTMENT OF TRANSPORTATION
 PLAN OF TOPOGRAPHIC SURVEY OF
CENTRAL STREET - ROUTE 202

IN THE TOWN OF
WINCHENDON
 AS ORDERED BY
 THE TOWN OF WINCHENDON
 109 FRONT STREET, WINCHENDON, MA 01475

DATE: JULY 12, 2016

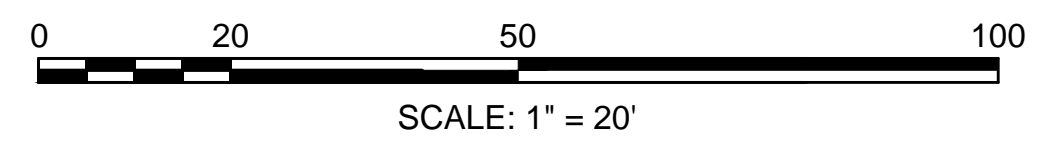
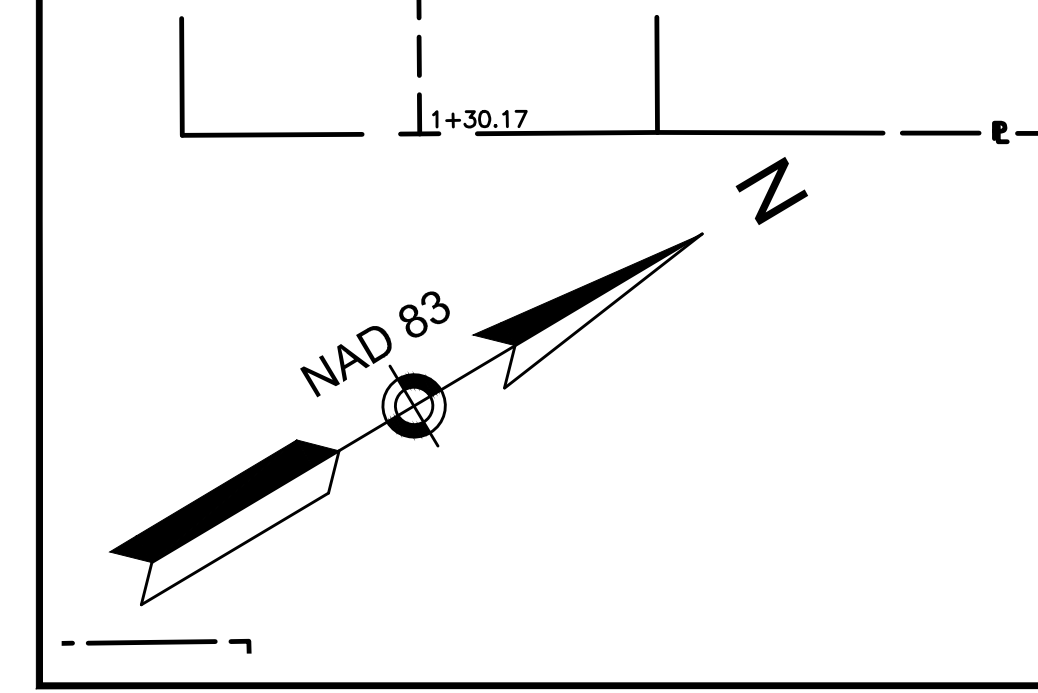
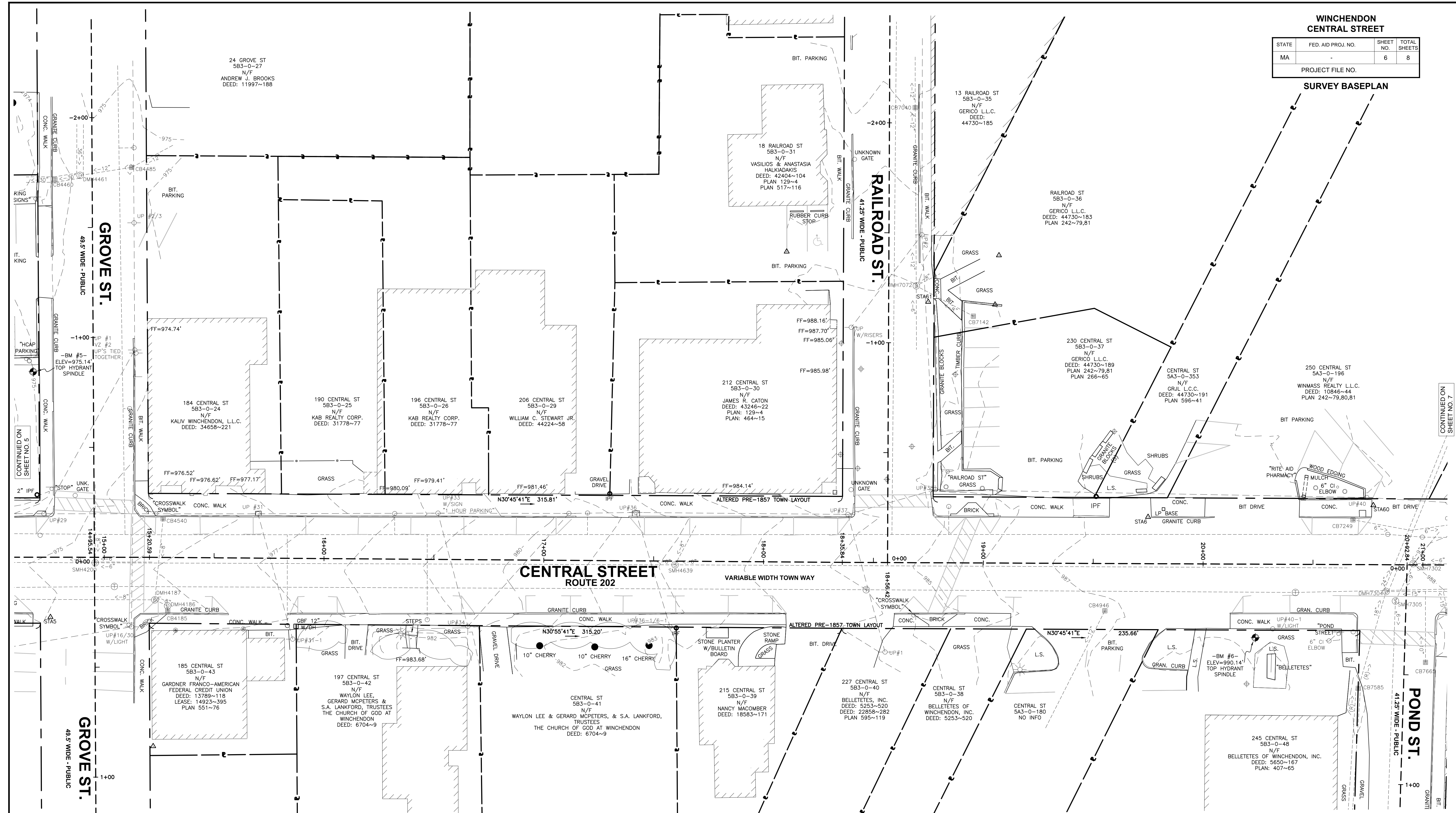
SHEET 5 OF 8

**WINCHENDON
CENTRAL STREET**

STATE	FED. AID PROJ. NO.	SHEET NO.	TOTAL SHEETS
MA	-	6	8

PROJECT FILE NO.

SURVEY BASEPLAN



NORTHEAST SURVEY CONSULTANTS
 116 PLEASANT ST. SUITE 302
 P.O. BOX 109
 EASTHAMPTON, MA 01027
 (413) 203-5144

PREPARED BY: _____

Daniel F. Stasz
 DANIEL F. STASZ
 No. 47160
 REGISTERED PROFESSIONAL LAND SURVEYOR

REV.	COMMENTS	DATE
0	SUBMITTED FOR REVIEW	07/12/2016

SCALE: 20 FEET TO THE INCH

FILE NAME:	16-021 MDOT.DWG
FIELD BOOK NO.:	XXXX
DRAWN BY:	CJH
CHECKED BY:	DFS
FIELD CHIEF:	JD
PARS. NO.:	XXXXXXX

MASSACHUSETTS DEPARTMENT OF TRANSPORTATION
 PLAN OF TOPOGRAPHIC SURVEY OF
CENTRAL STREET - ROUTE 202

IN THE TOWN OF
WINCHENDON
 AS ORDERED BY
 THE TOWN OF WINCHENDON
 109 FRONT STREET, WINCHENDON, MA 01475

DATE: JULY 12, 2016

SHEET 6 OF 8

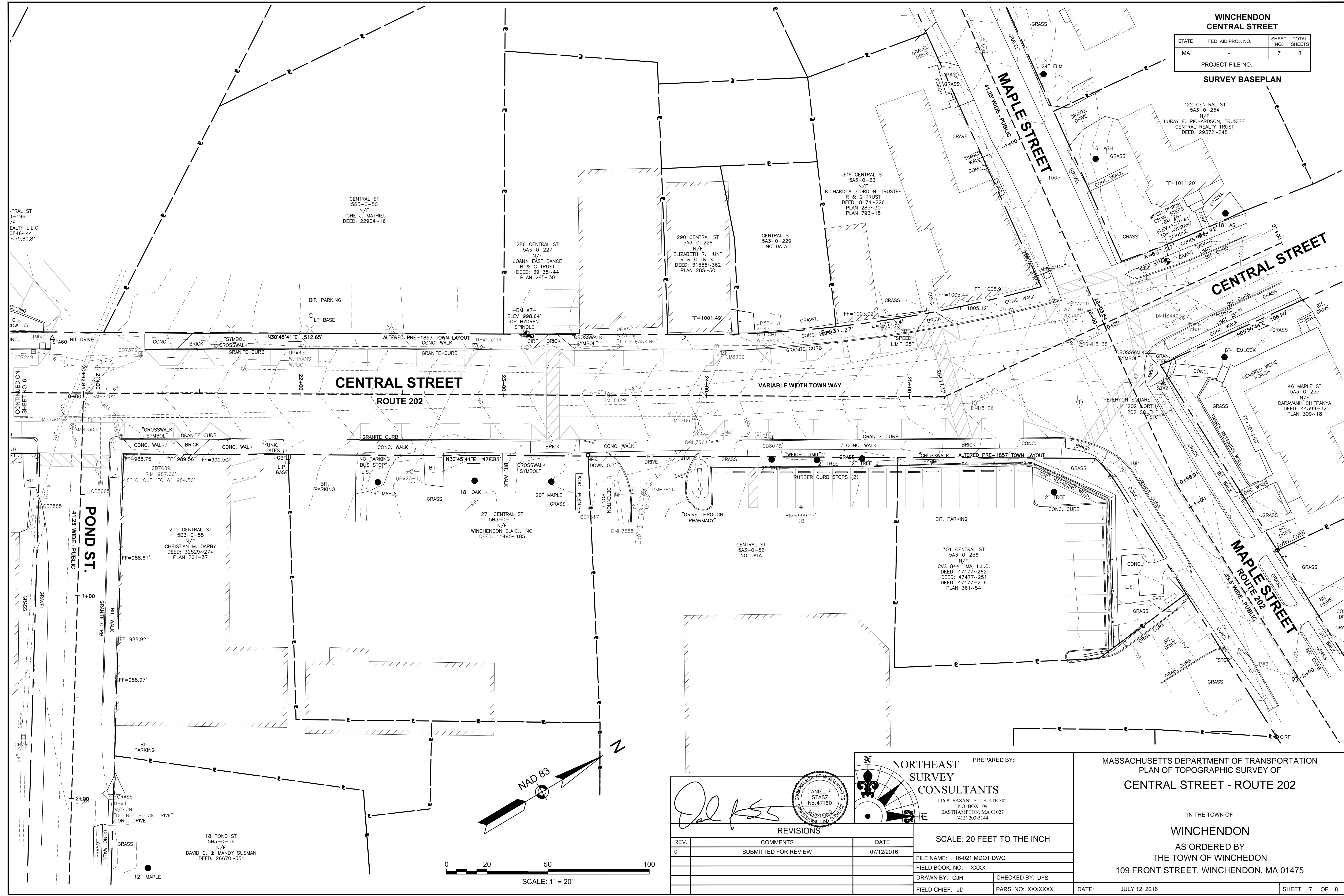
CONTINUED ON SHEET NO. 7

**WINCHENDON
CENTRAL STREET**

STATE	FED. AID PROJ. NO.	SHEET NO.	TOTAL SHEETS
MA		7	8

PROJECT FILE NO.

SURVEY BASEPLAN



TRIAL ST
5-196
N/F
SALTY L.L.C.
5846-44
~79,80,81

CENTRAL ST
583-0-50
N/F
TIGHE J. MATHIEU
DEED: 22904~16

286 CENTRAL ST
543-0-227
N/F
JOANN EAST DANCE
R & G TRUST
DEED: 39135~44
PLAN 285~30

290 CENTRAL ST
543-0-228
N/F
ELIZABETH R. HUNT
R & G TRUST
DEED: 31555~362
PLAN 285~30

306 CENTRAL ST
543-0-231
N/F
RICHARD A. GORDON, TRUSTEE
R & G TRUST
DEED: 8174~226
PLAN 285~30
PLAN 793~15

322 CENTRAL ST
543-0-254
N/F
LURAY F. RICHARDSON, TRUSTEE
CENTRAL REALTY TRUST
DEED: 29372~248

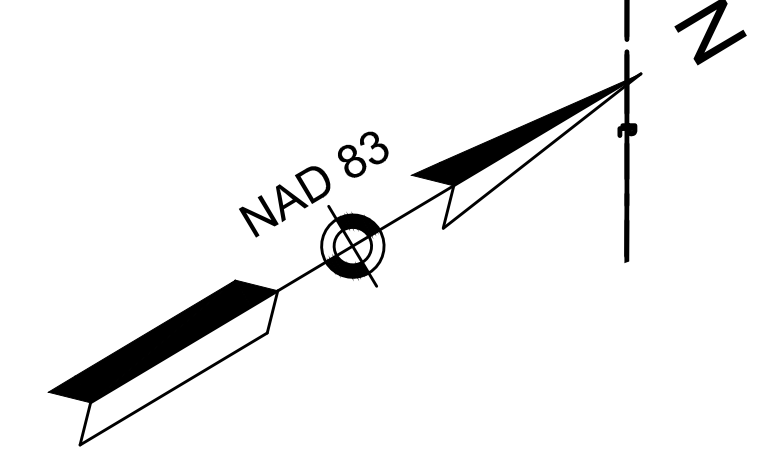
46 MAPLE ST
543-0-255
N/F
DARAVANH CHAITANYA
DEED: 44399~325
PLAN 309~18

255 CENTRAL ST
583-0-55
N/F
CHRISTIAN M. DARBY
DEED: 32529~274
PLAN 261~37

271 CENTRAL ST
583-0-53
N/F
WINCHENDON C.A.C., INC.
DEED: 11495~185

301 CENTRAL ST
543-0-256
N/F
CVS 8441 MA, L.L.C.
DEED: 47477~262
DEED: 47477~251
DEED: 47477~256
PLAN 361~54

18 POND ST
583-0-56
N/F
DAVID C. & MANDY SUSMAN
DEED: 26670~351



NORTHEAST SURVEY CONSULTANTS
116 PLEASANT ST. SUITE 302
P.O. BOX 109
EASTHAMPTON, MA 01027
(413) 203-5144

PREPARED BY:

REVISIONS

REV.	COMMENTS	DATE
0	SUBMITTED FOR REVIEW	07/12/2016

SCALE: 20 FEET TO THE INCH

FILE NAME: 16-021.MDOT.DWG
FIELD BOOK NO: XXXX
DRAWN BY: CJH
CHECKED BY: DFS
FIELD CHIEF: JD
PARS. NO: XXXXXX

MASSACHUSETTS DEPARTMENT OF TRANSPORTATION
PLAN OF TOPOGRAPHIC SURVEY OF
CENTRAL STREET - ROUTE 202

IN THE TOWN OF
WINCHENDON
AS ORDERED BY
THE TOWN OF WINCHENDON
109 FRONT STREET, WINCHENDON, MA 01475

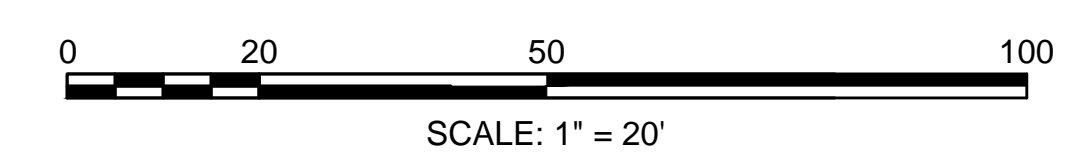
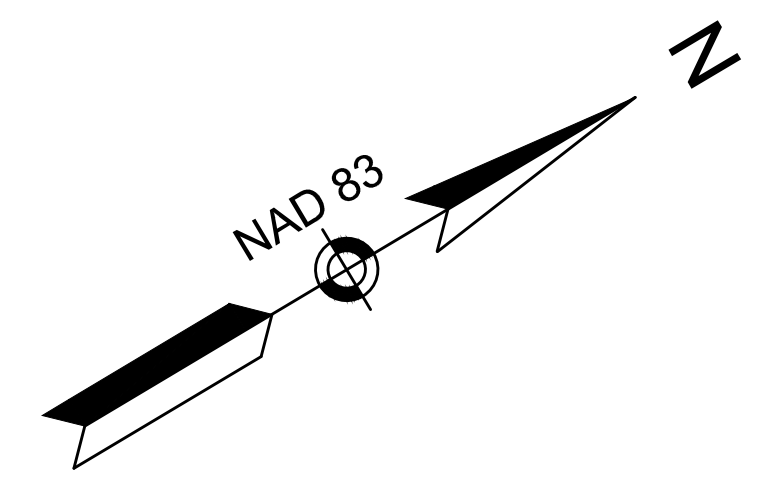
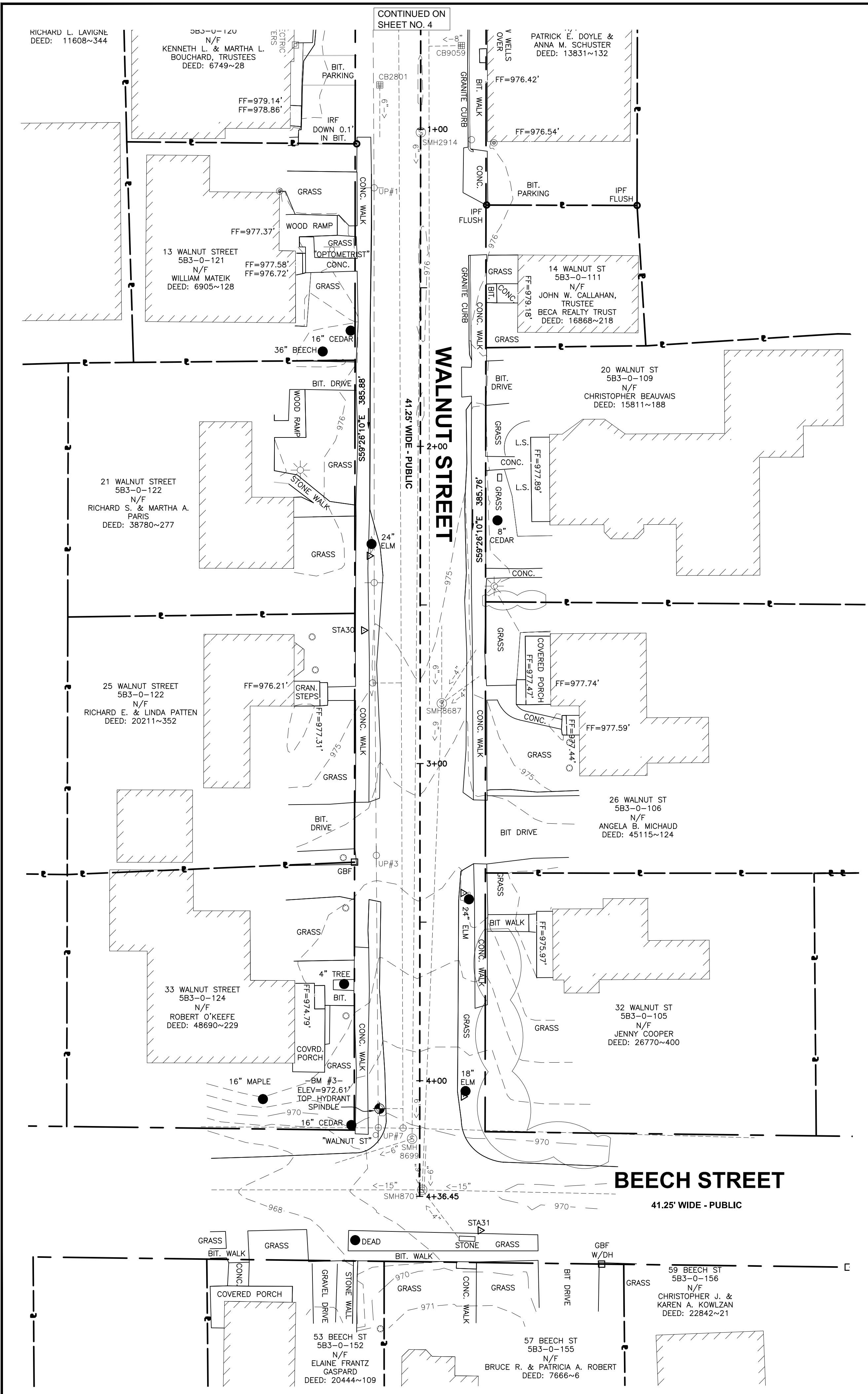
DATE: JULY 12, 2016
SHEET 7 OF 8

**WINCHENDON
CENTRAL STREET**

STATE	FED. AID PROJ. NO.	SHEET NO.	TOTAL SHEETS
MA	-	8	8

PROJECT FILE NO.

SURVEY BASEPLAN



NORTHEAST SURVEY CONSULTANTS
 116 PLEASANT ST. SUITE 302
 P.O. BOX 109
 EASTHAMPTON, MA 01027
 (413) 203-5144

PREPARED BY: _____

SCALE: 20 FEET TO THE INCH

FILE NAME: 16-021 MDOT.DWG
 FIELD BOOK NO: XXXX
 DRAWN BY: CJH
 CHECKED BY: DFS
 FIELD CHIEF: JD
 PARS. NO: XXXXXX

DATE: JULY 12, 2016

SHEET 8 OF 8

MASSACHUSETTS DEPARTMENT OF TRANSPORTATION
 PLAN OF TOPOGRAPHIC SURVEY OF
WALNUT STREET

IN THE TOWN OF
WINCHENDON
 AS ORDERED BY
 THE TOWN OF WINCHENDON
 109 FRONT STREET, WINCHENDON, MA 01475

REVISIONS

REV.	COMMENTS	DATE
0	SUBMITTED FOR REVIEW	07/12/2016

