

HIGHWAY GUARD DETAILS

NONE

TRAFFIC SIGNAL CONDUIT

NONE

WATER SUPPLY ALTERATIONS

NONE

DRAINAGE DETAILS

NONE

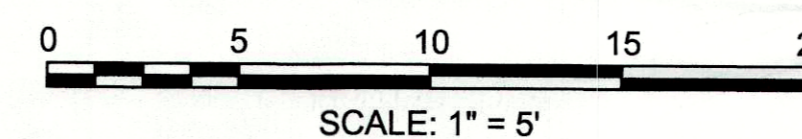
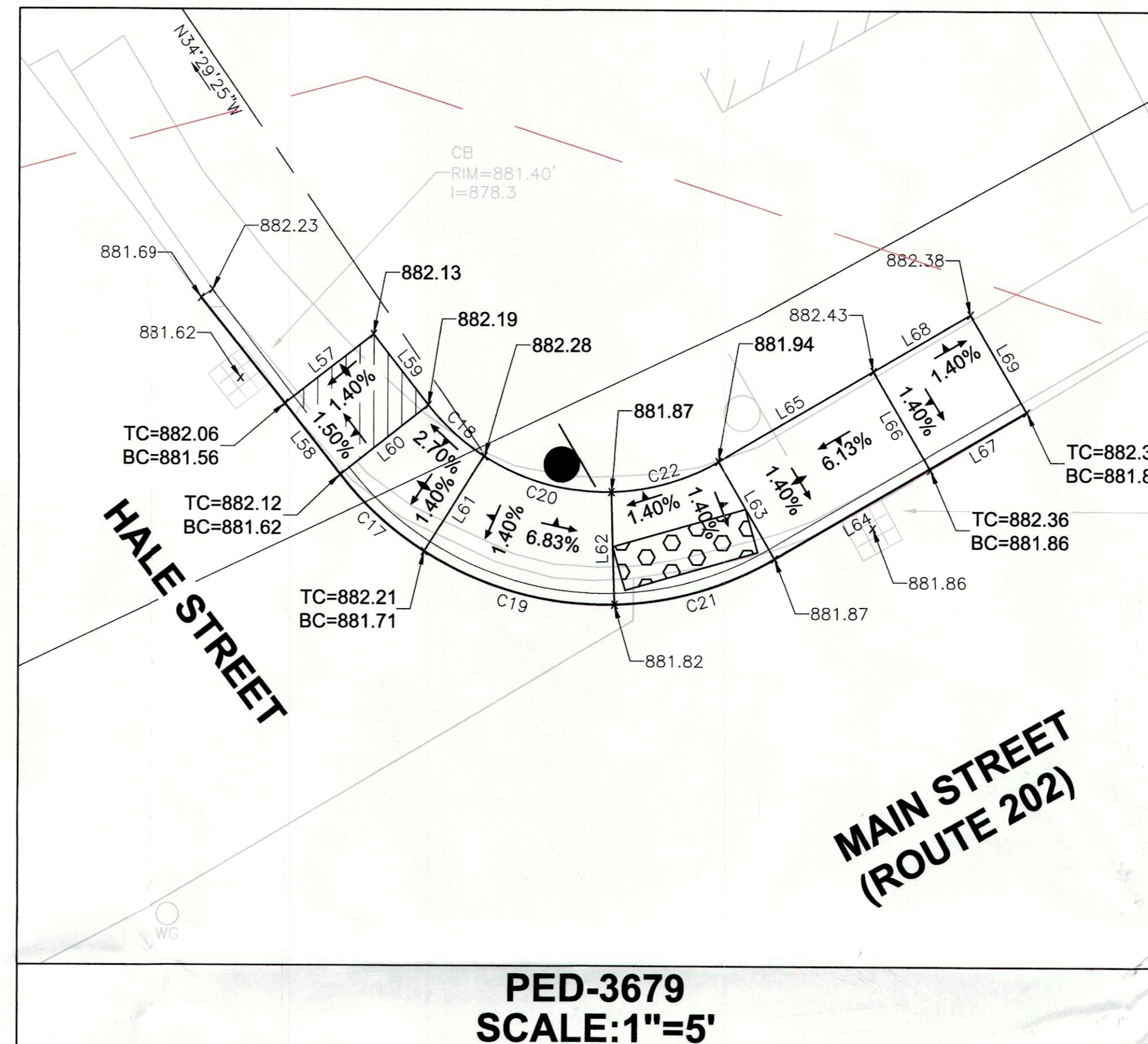
DISTRICT 2
ADA RETROFITS AT VARIOUS LOCATIONS

STATE	FED. AID PROJ. NO.	SHEET NO.	TOTAL SHEETS
MA	-	1	3
PROJECT FILE NO. 609385			

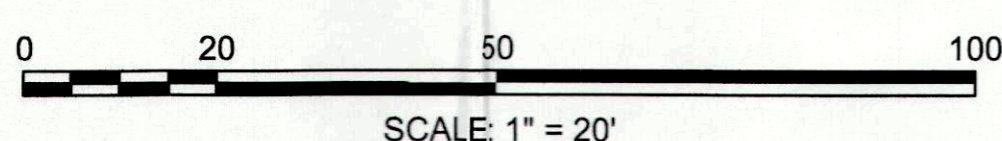
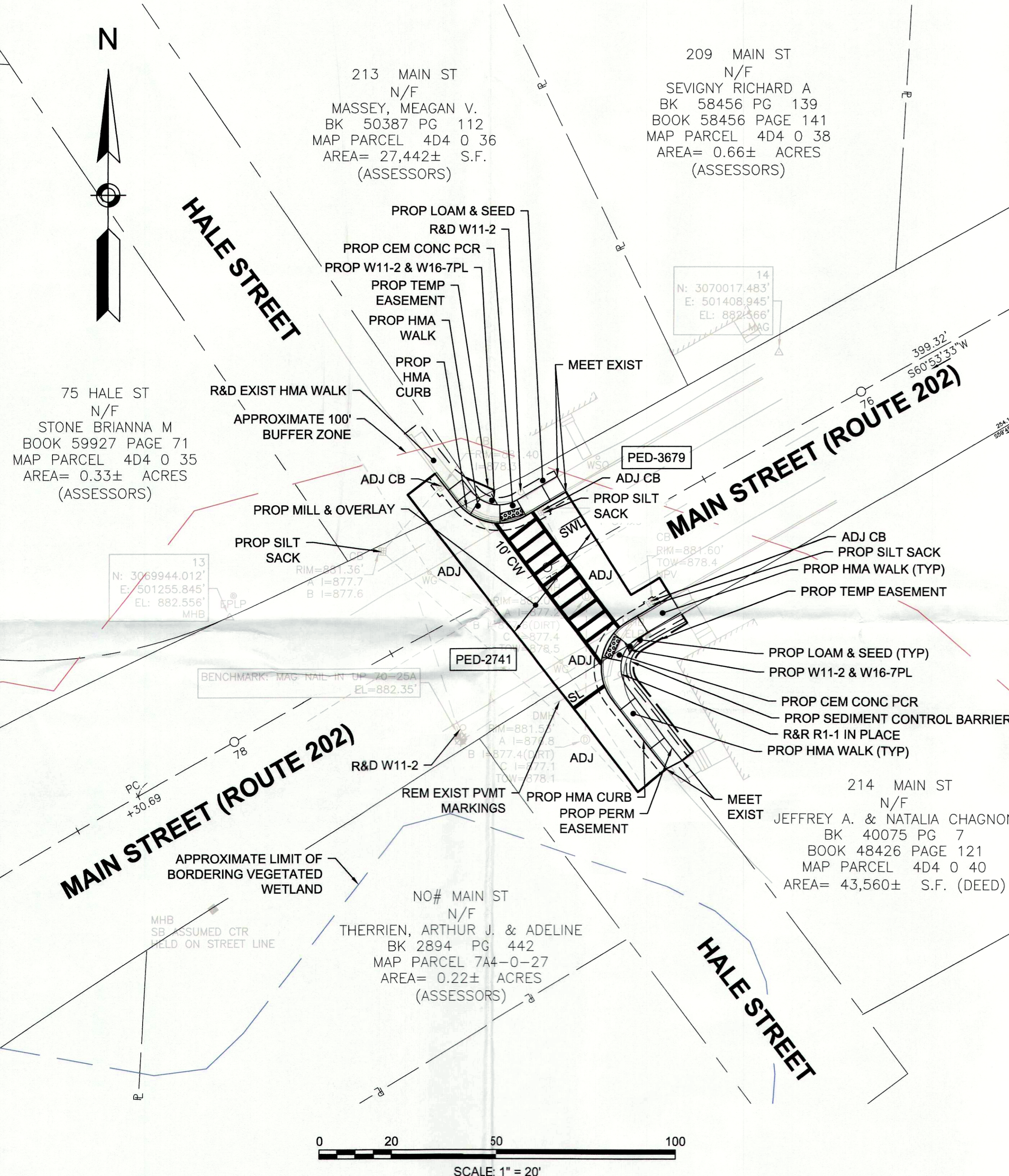
WINCHENDON
MAIN STREET (ROUTE 202) AT HALE STREET

SEGMENT TABLE

LINE #/CURVE #	LENGTH	DIRECTION/DELTA	RADIUS	TANGENT	NORTHING	EASTING
C17	5.09	19°25'25"	15.00	2.57	3069975.91 3069972.50	501319.13 501322.88
C18	3.35	19°12'06"	10.00	1.69	3069978.99 3069976.74	501323.07 501325.53
C19	8.95	34°11'36"	15.00	4.61	3069972.50 3069970.16	501322.88 501331.38
C20	6.01	34°24'55"	10.00	3.10	3069976.74 3069975.16	501325.53 501331.23
C21	7.50	28°39'14"	15.00	3.83	3069970.16 3069972.20	501331.38 501338.51
C22	5.00	28°39'14"	10.00	2.55	3069975.16 3069976.52	501331.23 501335.99
L57	5.00	N51°56'57"E			3069979.06 3069982.14	501316.66 501320.60
L58	4.00	N38°03'03"W			3069975.91 3069979.06	501319.13 501316.66
L59	4.00	S38°03'00"E			3069982.14 3069978.99	501320.60 501323.07
L60	5.00	N51°56'57"E			3069975.91 3069978.99	501319.13 501323.07
L61	5.00	N32°04'55"E			3069972.50 3069976.74	501322.88 501325.53
L62	5.00	N1°40'04"W			3069970.16 3069975.16	501331.38 501331.23
L63	5.00	N30°19'18"W			3069972.20 3069976.52	501338.51 501335.99
L64	8.00	S59°40'42"W			3069976.24 3069972.20	501345.42 501338.51
L65	8.00	S59°40'42"W			3069980.56 3069976.52	501342.90 501335.99
L66	5.00	N30°19'18"W			3069976.24 3069980.56	501345.42 501342.90
L67	5.00	S59°40'42"W			3069978.77 3069976.24	501349.74 501345.42
L68	5.00	N59°40'40"E			3069980.56 3069983.08	501342.90 501347.21
L69	5.00	N30°19'18"W			3069978.77 3069983.08	501349.74 501347.21



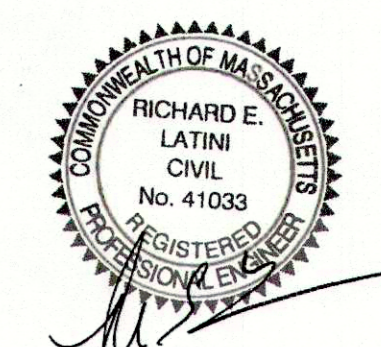
PED-3679
SCALE: 1"=5'



PEDESTRIAN CURB RAMP ON NARROW SIDEWALK WITH DETECTABLE WARNING PANEL (E107.2.1)

PED #	ROADWAY ELEV. AT RAMP ϵ	RAMP REFERENCE POINT			LENGTH OF PRIMARY RAMP	WIDTH OF SIDEWALK	WIDTH OF RAMP ENTRANCE	DEPTH OF LEVEL LANDING	TRANSITION		GUTTER SLOPE
		STREET	STATION	OFFSET					LEFT SIDE	RIGHT SIDE	
PED-3679	881.85'	HALE STREET	77+02	15.71' RT	5.0'	5.0'	7.5'	5.0'	9.0'	8.0'	0.37%

- NOTES:
- *SLOPE VARIES. VALUE IS MAX SLOPE OF A WARPED PANEL.
 - THE PERPENDICULAR DIMENSIONS TO THE CURB ALONG THE SIDEWALK INCLUDE 0.5' FOR THE WIDTH OF THE CURB.
 - LENGTHS INDICATED ARE FOR GRADING PURPOSES ONLY. CONTRACTOR IS TO VERIFY CURB LENGTHS IN THE FIELD BASED ON THE DETAILS PROVIDED.



1/12/2023 L:\1306113061_51 - 02 ADA Retrofit 609385\CUTSHEET\609385_HD_CONST_WINCHENDON_2.dwg
 Last Saved by: CLYMAN
 Printed by: Christopher Lyman

609385_HD_CONST_WINCHENDON_2.DWG Plotted on 12-Jan-2023 9:12 AM