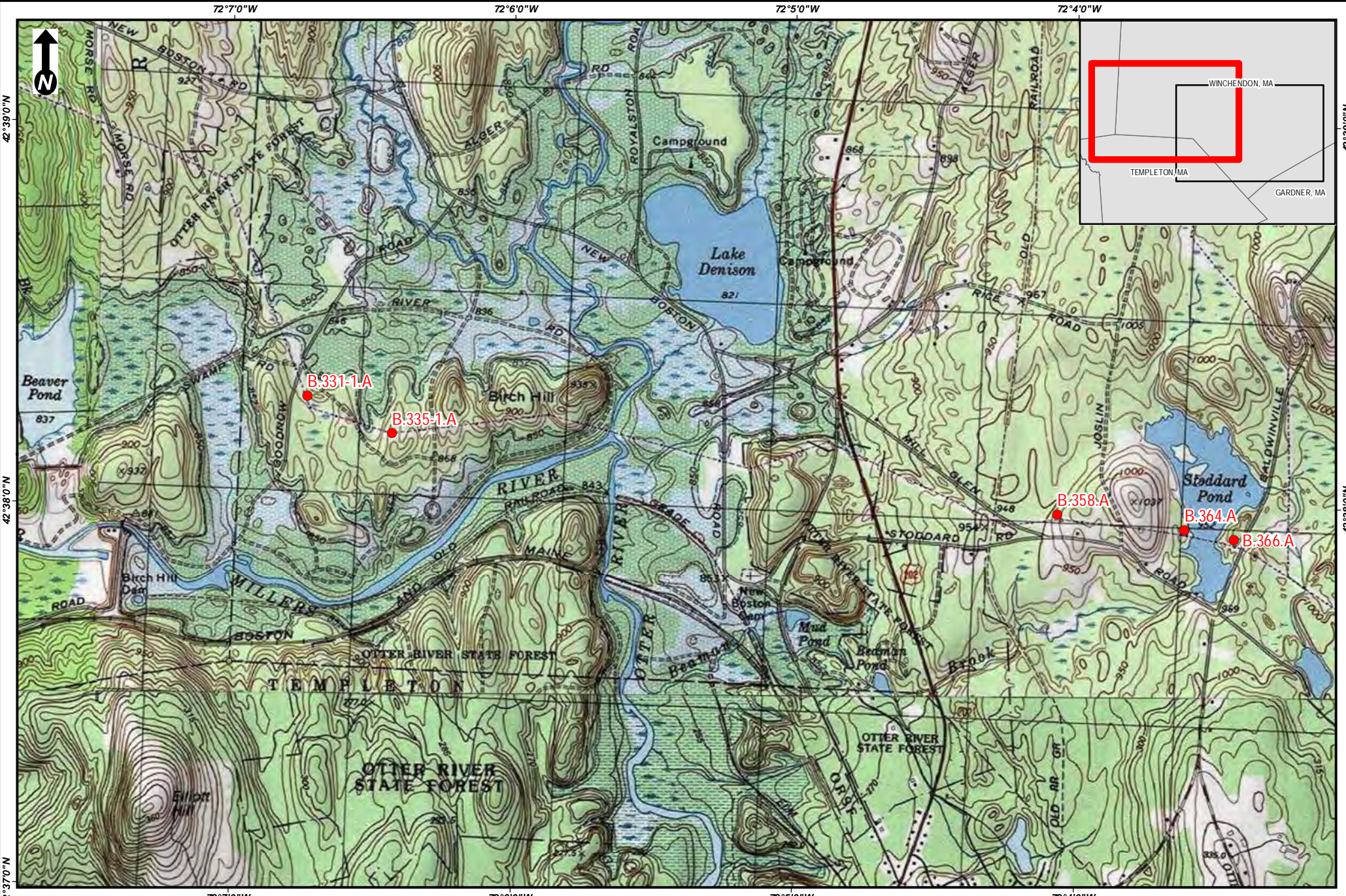


# Attachment B

A1/B2 Transmission Line– Geotechnical Soil Boring Program  
Winchendon, Massachusetts  
Notice of Intent

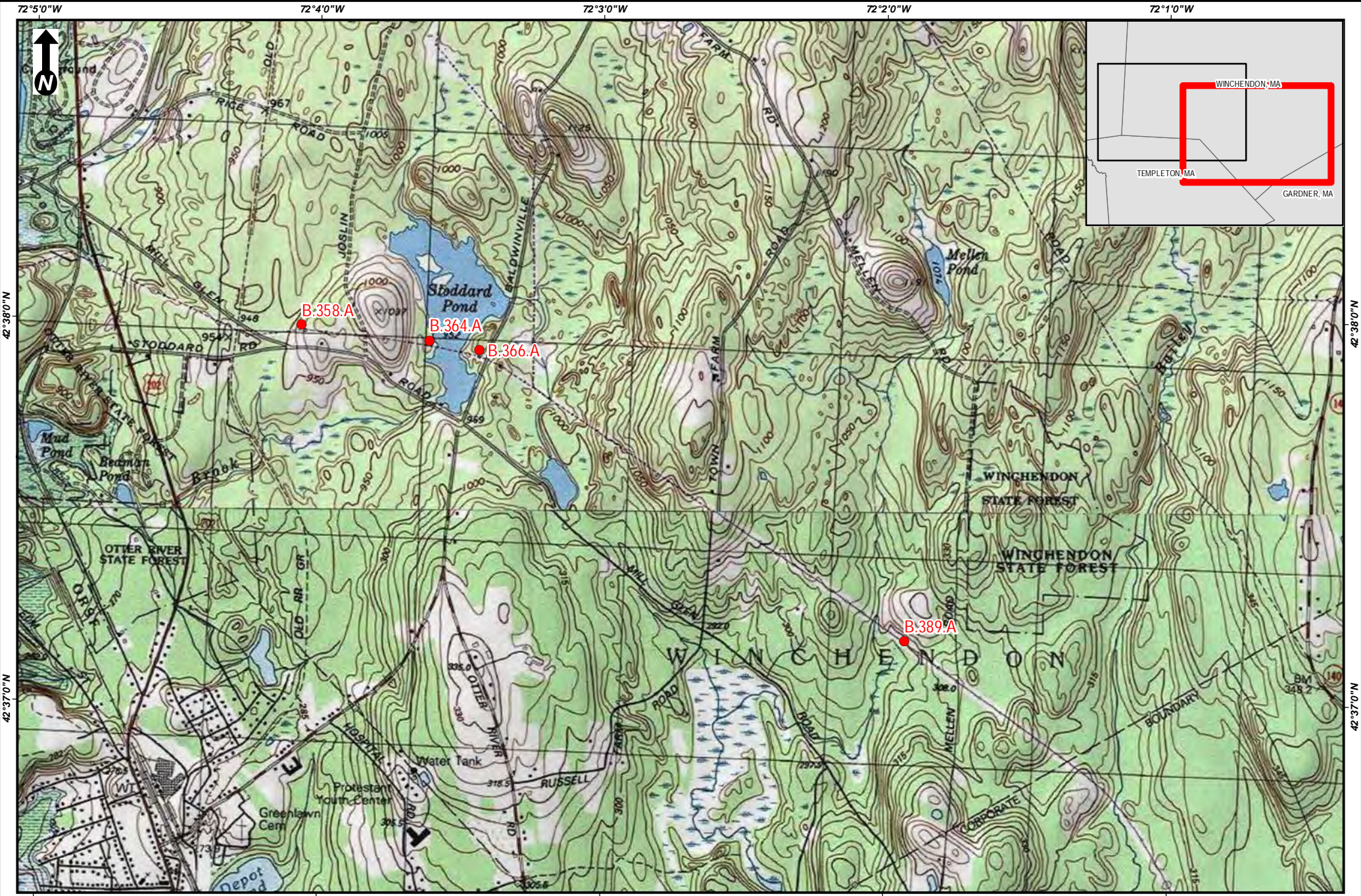
USGS SITE LOCUS MAP  
ENVIRONMENTAL RESOURCES MAP



Scale:  
1 inch = 2,000 feet  
0 1,000 2,000  
Feet  
(Page Size 8.5 x 11)

**A1/B2 TRANSMISSION LINE- GEOTECHNICAL SOIL BORING PROGRAM**  
**USGS Site Location Map**  
**Winchendon, MA**  
Page 1 of 2

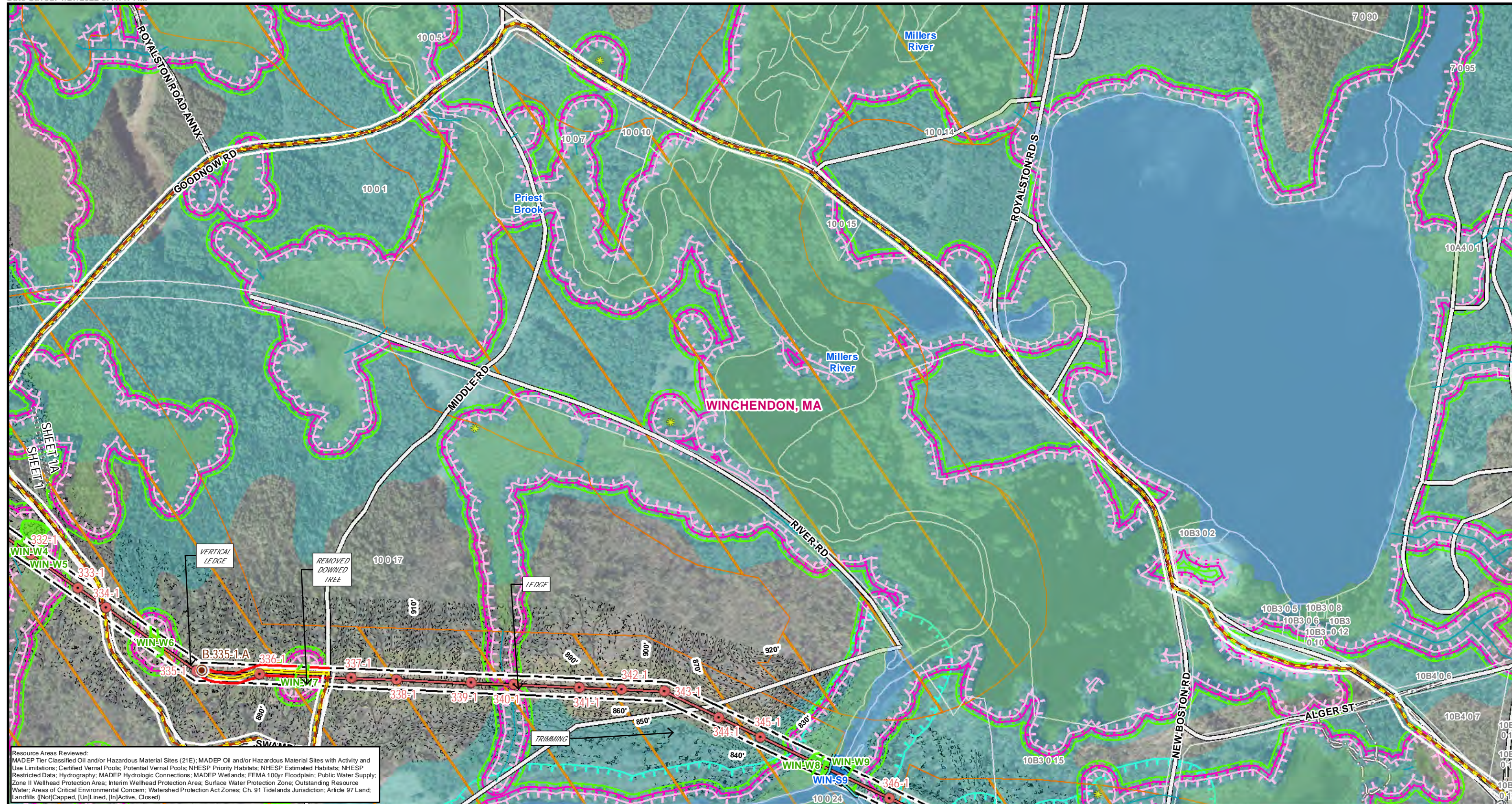
Source: Copyright:©  
2013 National  
Geographic Society, i-  
cubed



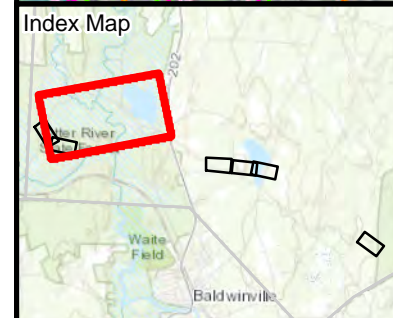
Scale:  
1 inch = 2,000 feet  
0 1,000 2,000  
Feet  
(Page Size 8.5 x 11)

**A1/B2 TRANSMISSION LINE- GEOTECHNICAL SOIL BORING PROGRAM**  
**USGS Site Location Map**  
**Winchendon, MA**  
**Page 2 of 2**

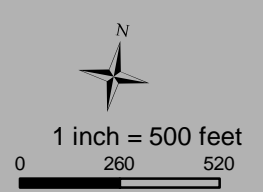
Source: Copyright:©  
2013 National  
Geographic Society, i-  
cubed



Resource Areas Reviewed:  
 MADEP Tier Classified Oil and/or Hazardous Material Sites (21E); MADEP Oil and/or Hazardous Material Sites with Activity and Use Limitations; Certified Vernal Pools; Potential Vernal Pools; NHESP Priority Habitats; NHESP Estimated Habitats; NHESP Restricted Data; Hydrography; MADEP Hydrologic Connections; MADEP Wetlands; FEMA 100yr Floodplain; Public Water Supply; Zone II Wellhead Protection Area; Interim Wellhead Protection Area; Surface Water Protection Zone; Outstanding Resource Water; Areas of Critical Environmental Concern; Watershed Protection Act Zones; Ch. 91 Tidelands Jurisdiction; Article 97 Landfills (NotCapped, UnLined, InActive, Closed)



Legend		Access Type		State Streams		Parcel Boundary		Article 97 Lands	
	Soil Boring Location		Preferred Access		State Streams		Parcel Boundary		Municipal
	Existing Structure		OffROW Preferred Access		State Wetlands*		Hiking Trails		Municipal
	Existing OH Line		Alternate Access		State Open Water*		Gate		
	Approx ROW		OffROW Alternate Access		50ft No Disturbance Zone		Fence		
	Construction Matting		OffROW Alternate Access		75ft No Build Zone		Stonewall		
	Work Envelope*		Delineated Top of Bank		100ft Buffer to Wetlands & Streams		Guardrail		
	Establish New Access		Delineated Stream Centerline		200ft Riverfront Area		Culvert		
	Modifications to Existing Access		Delineated Open Water		FEMA 100yr Floodplain*		2ft Contour		
	No Modifications		Delineated Wetland Edge		NHESP Priority & Estimated Habitats		10ft Contour		
	Delineated Wetland Area*								

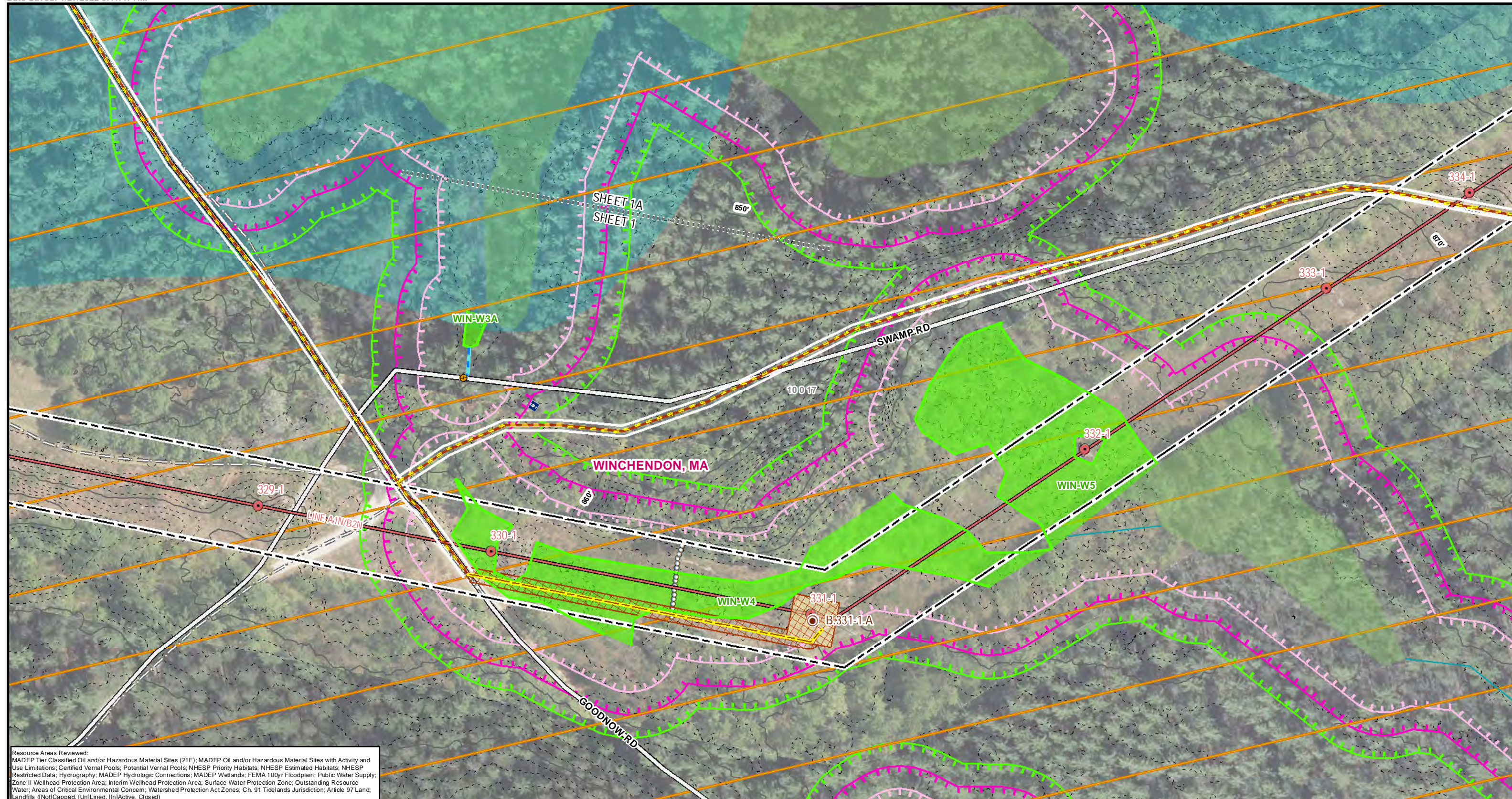


## A1/B2 TRANSMISSION LINE GEOTECHNICAL SOIL BORING PROGRAM

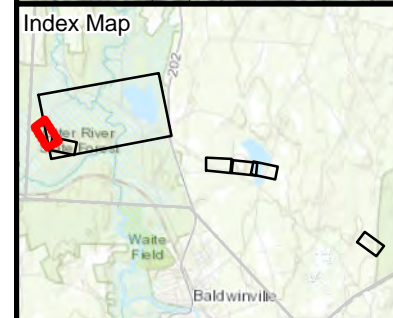
### Environmental Resources Map

Winchendon, MA  
Page 1A of 6

Imagery Source:  
National Grid FY22 Imagery  
VT 2019 Aerial Imagery  
NH GRANIT 2015 Aerial Imagery  
MA MassGIS 2021 Aerial Imagery



Resource Areas Reviewed:  
 MADEP Tier Classified Oil and/or Hazardous Material Sites (21E); MADEP Oil and/or Hazardous Material Sites with Activity and Use Limitations; Certified Vernal Pools; Potential Vernal Pools; NHESP Priority Habitats; NHESP Estimated Habitats; NHESP Restricted Data; Hydrography; MADEP Hydrologic Connections; MADEP Wetlands; FEMA 100yr Floodplain; Public Water Supply; Zone II Wellhead Protection Area; Interim Wellhead Protection Area; Surface Water Protection Zone; Outstanding Resource Water; Areas of Critical Environmental Concern; Watershed Protection Act Zones; Ch. 91 Tidelands Jurisdiction; Article 97 Land; Landfills (NotCapped, [Un]Lined, [In]Active, Closed)



Legend		Access Type		Article 97 Lands	
Soil Boring Location	Preferred Access	State Streams	Parcel Boundary	Municipal	
Existing Structure	OffROW Preferred Access	State Wetlands*	Hiking Trails	Municipal	
Existing OH Line	Alternate Access	State Open Water*	Gate		
Approx ROW	OffROW Alternate Access	50ft No Disturbance Zone	Fence		
Construction Matting	Delineated Top of Bank	75ft No Build Zone	Stonewall		
Work Envelope*	Delineated Stream Centerline	100ft Buffer to Wetlands & Streams	Guardrail		
Establish New Access	Delineated Open Water	200ft Riverfront Area	Culvert		
Modifications to Existing Access	Delineated Wetland Edge	FEMA 100yr Floodplain*	2ft Contour		
No Modifications	Delineated Wetland Area*	NHESP Priority & Estimated Habitats	10ft Contour		

## A1/B2 TRANSMISSION LINE GEOTECHNICAL SOIL BORING PROGRAM

### Environmental Resources Map

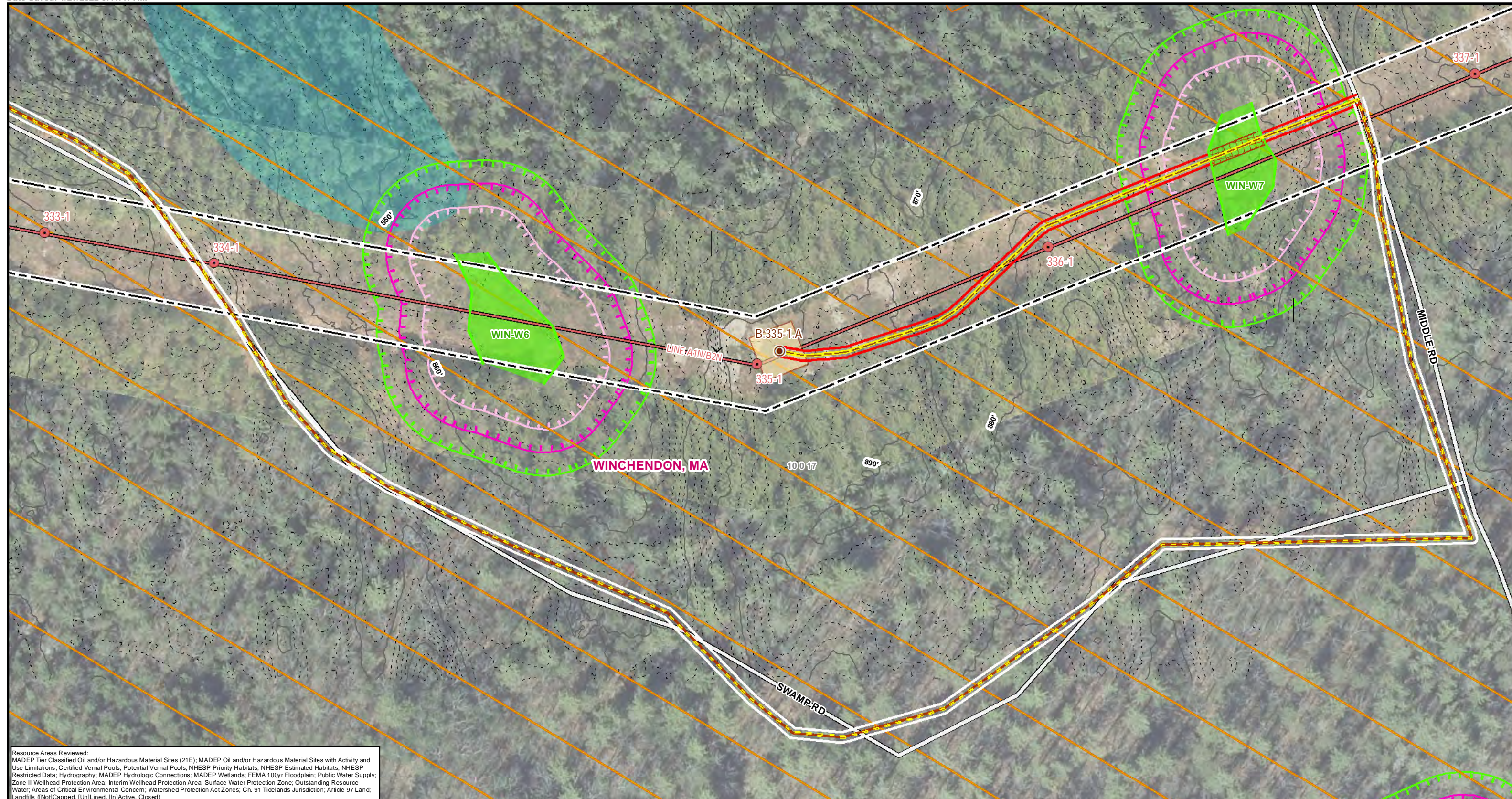
Winchendon, MA  
 Page 1 of 6

1 inch = 100 feet

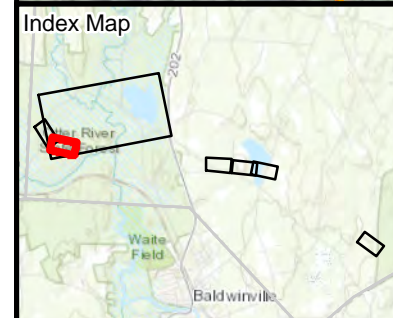
Feet

\*Indicates Layers Set to Transparency

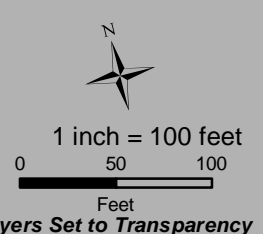
Imagery Source:  
 National Grid FY22 Imagery  
 VT 2019 Aerial Imagery  
 NH GRANIT 2015 Aerial Imagery  
 MA MassGIS 2021 Aerial Imagery



Resource Areas Reviewed:  
 MADEP Tier Classified Oil and/or Hazardous Material Sites (21E); MADEP Oil and/or Hazardous Material Sites with Activity and Use Limitations; Certified Vernal Pools; Potential Vernal Pools; NHESP Priority Habitats; NHESP Estimated Habitats; NHESP Restricted Data; Hydrography; MADEP Hydrologic Connections; MADEP Wetlands; FEMA 100yr Floodplain; Public Water Supply; Zone II Wellhead Protection Area; Interim Wellhead Protection Area; Surface Water Protection Zone; Outstanding Resource Water; Areas of Critical Environmental Concern; Watershed Protection Act Zones; Ch. 91 Tidelands Jurisdiction; Article 97 Land; Landfills (NotCapped, [Un]Lined, [In]Active, Closed)



Legend	
● Soil Boring Location	● Existing Structure
— Existing OH Line	— Approx ROW
▨ Construction Matting	▨ Work Envelope*
<b>Access Scope</b>	
— Establish New Access	— Modifications to Existing Access
— No Modifications	
<b>Access Type</b>	
— Preferred Access	— OffROW Preferred Access
— Alternate Access	— OffROW Alternate Access
— Delineated Top of Bank	— Delineated Stream Centerline
— Delineated Open Water	— Delineated Wetland Edge
— Delineated Wetland Area*	
— State Streams	— State Wetlands*
— State Open Water*	— 50ft No Disturbance Zone
— 75ft No Build Zone	— 100ft Buffer to Wetlands & Streams
— 200ft Riverfront Area	— FEMA 100yr Floodplain*
— NHESP Priority & Estimated Habitats	
▭ Parcel Boundary	▭ Article 97 Lands
— Hiking Trails	— Gate
— Fence	— Stonewall
— Guardrail	— Culvert
— 2ft Contour	— 10ft Contour

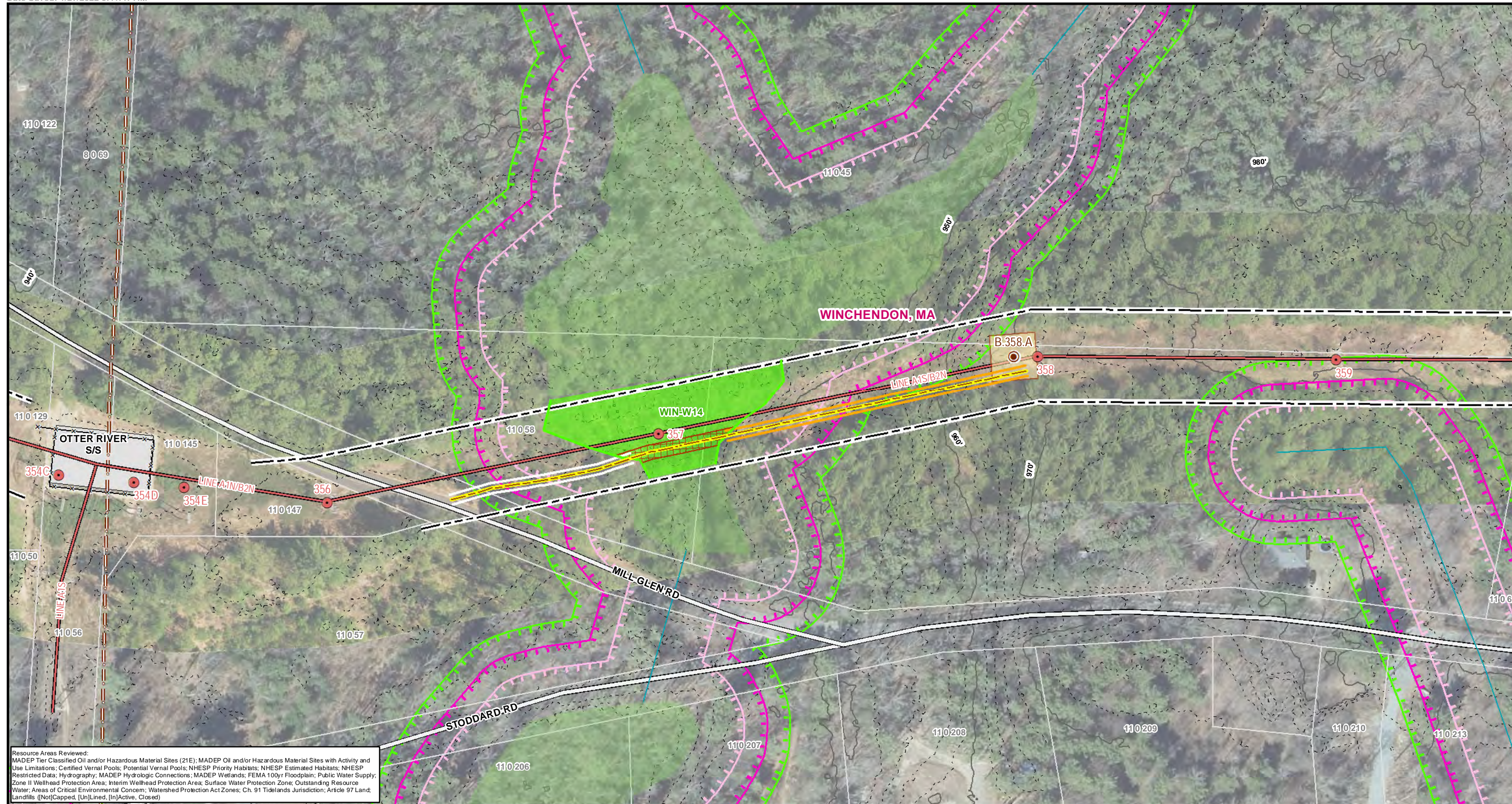


## A1/B2 TRANSMISSION LINE GEOTECHNICAL SOIL BORING PROGRAM

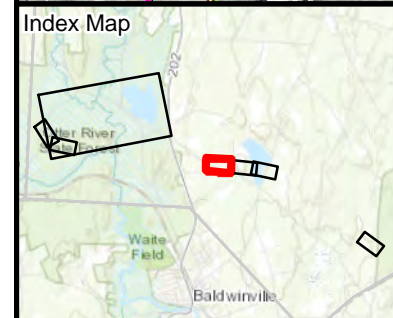
### Environmental Resources Map

Winchendon, MA  
 Page 2 of 6

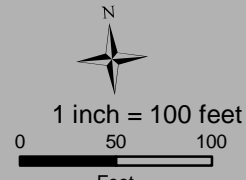
Imagery Source:  
 National Grid FY22 Imagery  
 VT 2019 Aerial Imagery  
 NH GRANIT 2015 Aerial Imagery  
 MA MassGIS 2021 Aerial Imagery



Resource Areas Reviewed:  
 MADEP Tier Classified Oil and/or Hazardous Material Sites (21E); MADEP Oil and/or Hazardous Material Sites with Activity and Use Limitations; Certified Vernal Pools; Potential Vernal Pools; NHESP Priority Habitats; NHESP Estimated Habitats; NHESP Restricted Data; Hydrography; MADEP Hydrologic Connections; MADEP Wetlands; FEMA 100yr Floodplain; Public Water Supply; Zone II Wellhead Protection Area; Interim Wellhead Protection Area; Surface Water Protection Zone; Outstanding Resource Water; Areas of Critical Environmental Concern; Watershed Protection Act Zones; Ch. 91 Tidelands Jurisdiction; Article 97 Landfills (NotCapped, [Un]Lined, [In]Active, Closed)



Legend	
Soil Boring Location	Preferred Access
Existing Structure	OffROW Preferred Access
Existing OH Line	Alternate Access
Approx ROW	OffROW Alternate Access
Construction Matting	Delineated Top of Bank
Work Envelope*	Delineated Stream Centerline
Establish New Access	Delineated Open Water
Modifications to Existing Access	Delineated Wetland Edge
No Modifications	Delineated Wetland Area*
State Streams	State Wetlands*
State Open Water*	50ft No Disturbance Zone
75ft No Build Zone	100ft Buffer to Wetlands & Streams
200ft Riverfront Area	FEMA 100yr Floodplain*
NHESP Priority & Estimated Habitats	2ft Contour
10ft Contour	Parcel Boundary
Hiking Trails	Article 97 Lands
Gate	Municipal
Fence	Stonewall
Guardrail	Culvert

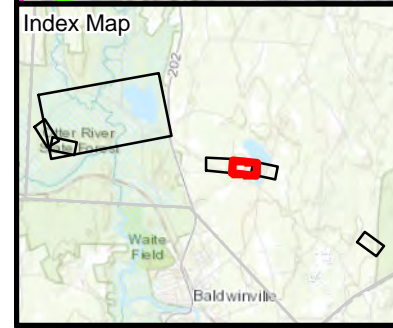


## A1/B2 TRANSMISSION LINE GEOTECHNICAL SOIL BORING PROGRAM

### Environmental Resources Map

Winchendon, MA  
 Page 3 of 6

Imagery Source:  
 National Grid FY22 Imagery  
 VT 2019 Aerial Imagery  
 NH GRANIT 2015 Aerial Imagery  
 MA MassGIS 2021 Aerial Imagery



Legend		Access Type		Environmental Resources		Structures & Features		Topography & Boundaries	
Soil Boring Location	Preferred Access	State Streams	Parcel Boundary	State Wetlands*	State Open Water*	Article 97 Lands	10ft Contour	50ft No Disturbance Zone	Municipal
Existing Structure	OffROW Preferred Access	State Wetlands*	Hiking Trails	State Open Water*	State Open Water*	Municipal	2ft Contour	75ft No Build Zone	Municipal
Existing OH Line	Alternate Access	State Wetlands*	Gate	State Open Water*	State Open Water*	Municipal	10ft Contour	75ft No Build Zone	Municipal
Approx ROW	OffROW Alternate Access	State Wetlands*	Fence	State Open Water*	State Open Water*	Municipal	10ft Contour	75ft No Build Zone	Municipal
Construction Matting	OffROW Alternate Access	State Wetlands*	Stonewall	State Open Water*	State Open Water*	Municipal	10ft Contour	75ft No Build Zone	Municipal
Work Envelope*	OffROW Alternate Access	State Wetlands*	Guardrail	State Open Water*	State Open Water*	Municipal	10ft Contour	75ft No Build Zone	Municipal
<b>Access Scope</b>	Delineated Top of Bank	State Wetlands*	Culvert	State Open Water*	State Open Water*	Municipal	10ft Contour	75ft No Build Zone	Municipal
Establish New Access	Delineated Stream Centerline	State Wetlands*	200ft Riverfront Area	State Open Water*	State Open Water*	Municipal	10ft Contour	75ft No Build Zone	Municipal
Modifications to Existing Access	Delineated Open Water	State Wetlands*	FEMA 100yr Floodplain*	State Open Water*	State Open Water*	Municipal	10ft Contour	75ft No Build Zone	Municipal
No Modifications	Delineated Wetland Edge	State Wetlands*	NHEP Priority & Estimated Habitats	State Open Water*	State Open Water*	Municipal	10ft Contour	75ft No Build Zone	Municipal
	Delineated Wetland Area*	State Wetlands*		State Open Water*	State Open Water*	Municipal	10ft Contour	75ft No Build Zone	Municipal



## A1/B2 TRANSMISSION LINE GEOTECHNICAL SOIL BORING PROGRAM

### Environmental Resources Map

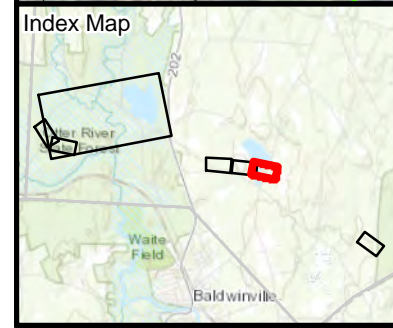
Winchendon, MA  
 Page 4 of 6

Imagery Source:  
 National Grid FY22 Imagery  
 VT 2019 Aerial Imagery  
 NH GRANIT 2015 Aerial Imagery  
 MA MassGIS 2021 Aerial Imagery





Resource Areas Reviewed:  
 MADEP Tier Classified Oil and/or Hazardous Material Sites (21E); MADEP Oil and/or Hazardous Material Sites with Activity and Use Limitations; Certified Vernal Pools; Potential Vernal Pools; NHESP Priority Habitats; NHESP Estimated Habitats; NHESP Restricted Dates; Hydrography; MADEP Hydrologic Connections; MADEP Wetlands; FEMA 100yr Floodplain; Public Water Supply; Zone II Wellhead Protection Area; Interim Wellhead Protection Area; Surface Water Protection Zone; Outstanding Resource Water; Areas of Critical Environmental Concern; Watershed Protection Act Zones; Ch. 91 Tidelands Jurisdiction; Article 97 Land; Landfills (NotCapped, UnLined, InActive, Closed)



Legend		Access Type		State Streams		Parcel Boundary		Article 97 Lands	
Soil Boring Location	Preferred Access	State Streams	Parcel Boundary	State Wetlands*	Hiking Trails	Municipal	Municipal	Municipal	Municipal
Existing Structure	OffROW Preferred Access	State Open Water*	50ft No Disturbance Zone	State Open Water*	75ft No Build Zone	100ft Buffer to Wetlands & Streams	200ft Riverfront Area	FEMA 100yr Floodplain*	NHESP Priority & Estimated Habitats
Existing OH Line	Alternate Access	Delineated Top of Bank	Delineated Stream Centerline	Delineated Open Water	Delineated Wetland Edge	Delineated Wetland Area*	2ft Contour	10ft Contour	
Approx ROW	OffROW Alternate Access	Delineated Top of Bank	Delineated Stream Centerline	Delineated Open Water	Delineated Wetland Edge	Delineated Wetland Area*	2ft Contour	10ft Contour	
Construction Matting	OffROW Alternate Access	Delineated Top of Bank	Delineated Stream Centerline	Delineated Open Water	Delineated Wetland Edge	Delineated Wetland Area*	2ft Contour	10ft Contour	
Work Envelope*	OffROW Alternate Access	Delineated Top of Bank	Delineated Stream Centerline	Delineated Open Water	Delineated Wetland Edge	Delineated Wetland Area*	2ft Contour	10ft Contour	
Establish New Access	OffROW Alternate Access	Delineated Top of Bank	Delineated Stream Centerline	Delineated Open Water	Delineated Wetland Edge	Delineated Wetland Area*	2ft Contour	10ft Contour	
Modifications to Existing Access	OffROW Alternate Access	Delineated Top of Bank	Delineated Stream Centerline	Delineated Open Water	Delineated Wetland Edge	Delineated Wetland Area*	2ft Contour	10ft Contour	
No Modifications	OffROW Alternate Access	Delineated Top of Bank	Delineated Stream Centerline	Delineated Open Water	Delineated Wetland Edge	Delineated Wetland Area*	2ft Contour	10ft Contour	

## A1/B2 TRANSMISSION LINE GEOTECHNICAL SOIL BORING PROGRAM

### Environmental Resources Map

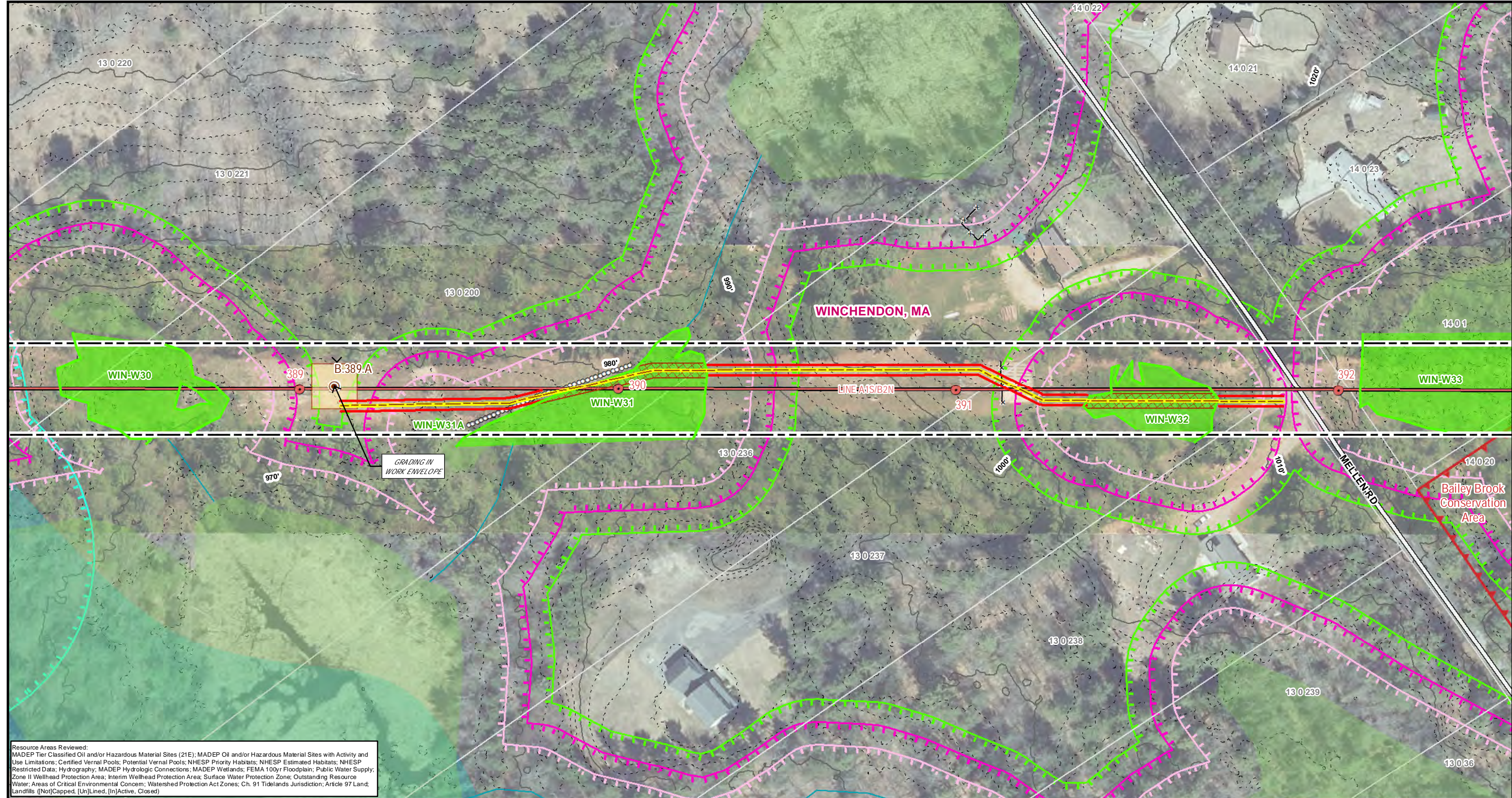
Winchendon, MA  
Page 5 of 6

1 inch = 100 feet

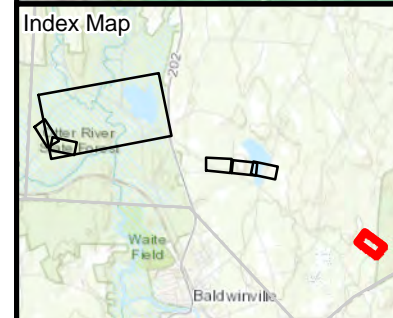
0 50 100  
Feet

*\*Indicates Layers Set to Transparency*

Imagery Source:  
 National Grid FY22 Imagery  
 VT 2019 Aerial Imagery  
 NH GRANIT 2015 Aerial Imagery  
 MA MassGIS 2021 Aerial Imagery



Resource Areas Reviewed:  
 MADEP Tier Classified Oil and/or Hazardous Material Sites (21E); MADEP Oil and/or Hazardous Material Sites with Activity and Use Limitations; Certified Vernal Pools; Potential Vernal Pools; NHESP Priority Habitats; NHESP Estimated Habitats; NHESP Restricted Data; Hydrography; MADEP Hydrologic Connections; MADEP Wetlands; FEMA 100yr Floodplain; Public Water Supply; Zone II Wellhead Protection Area; Interim Wellhead Protection Area; Surface Water Protection Zone; Outstanding Resource Water; Areas of Critical Environmental Concern; Watershed Protection Act Zones; Ch. 91 Tidelands Jurisdiction; Article 97 Land; Landfills (Not[Capped, Un]Lined, [In]Active, Closed)



Legend	
● Soil Boring Location	Access Type
● Existing Structure	● Preferred Access
— Existing OH Line	— OffROW Preferred Access
— Approx ROW	— Alternate Access
■ Construction Matting	— OffROW Alternate Access
■ Work Envelope*	— Delineated Top of Bank
<b>Access Scope</b>	— Delineated Stream Centerline
■ Establish New Access	■ Delineated Open Water
■ Modifications to Existing Access	■ Delineated Wetland Edge
■ No Modifications	■ Delineated Wetland Area*
— State Streams	■ State Wetlands*
— State Open Water*	■ State Open Water*
— 50ft No Disturbance Zone	— 50ft No Disturbance Zone
— 75ft No Build Zone	— 75ft No Build Zone
— 100ft Buffer to Wetlands & Streams	— 100ft Buffer to Wetlands & Streams
— 200ft Riverfront Area	— 200ft Riverfront Area
— FEMA 100yr Floodplain*	— FEMA 100yr Floodplain*
— NHESP Priority & Estimated Habitats	— NHESP Priority & Estimated Habitats
— Parcel Boundary	— Article 97 Lands
— Hiking Trails	— Municipal
— Gate	
— Fence	
— Stonewall	
— Guardrail	
— Culvert	
— 2ft Contour	
— 10ft Contour	

## A1/B2 TRANSMISSION LINE GEOTECHNICAL SOIL BORING PROGRAM

### Environmental Resources Map

Winchendon, MA  
 Page 6 of 6

1 inch = 100 feet

Feet

\*Indicates Layers Set to Transparency

Imagery Source:  
 National Grid FY22 Imagery  
 VT 2019 Aerial Imagery  
 NH GRANIT 2015 Aerial Imagery  
 MA MassGIS 2021 Aerial Imagery