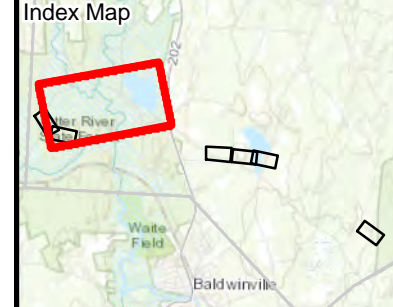
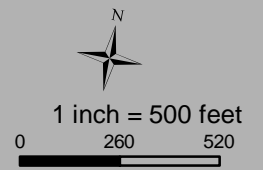


Resource Areas Reviewed:
 MADEP Tier Classified Oil and/or Hazardous Material Sites (21E); MADEP Oil and/or Hazardous Material Sites with Activity and Use Limitations; Certified Vernal Pools; Potential Vernal Pools; NHESP Priority Habitats; NHESP Estimated Habitats; NHESP Restricted Data; Hydrography; MADEP Hydrologic Connections; MADEP Wetlands; FEMA 100yr Floodplain; Public Water Supply; Zone II Wellhead Protection Area; Interim Wellhead Protection Area; Surface Water Protection Zone; Outstanding Resource Water; Areas of Critical Environmental Concern; Watershed Protection Act Zones; Ch. 91 Tidelands Jurisdiction; Article 97 Land; Landfills (Not Capped, Unlined, In Active, Closed)



Legend		Access Type		State Streams		Parcel Boundary		Article 97 Lands	
	Soil Boring Location		Preferred Access		State Streams		Parcel Boundary		Municipal
	Existing Structure		OffROW Preferred Access		State Wetlands*		Hiking Trails		Municipal
	Existing OH Line		Alternate Access		State Open Water*		Gate		Municipal
	Approx ROW		OffROW Alternate		50ft No Disturbance Zone		Fence		Municipal
	Construction Matting		OffROW Alternate		75ft No Build Zone		Stonewall		Municipal
	Work Envelope*		Delineated Top of Bank		100ft Buffer to Wetlands & Streams		Guardrail		Municipal
	Establish New Access		Delineated Stream Centerline		200ft Riverfront Area		Culvert		Municipal
	Modifications to Existing Access		Delineated Open Water		FEMA 100yr Floodplain*		2ft Contour		Municipal
	No Modifications		Delineated Wetland Edge		NHESP Priority & Estimated Habitats		10ft Contour		Municipal
	Delineated Wetland Area*		Delineated Wetland Area*		NHESP Priority & Estimated Habitats		10ft Contour		Municipal



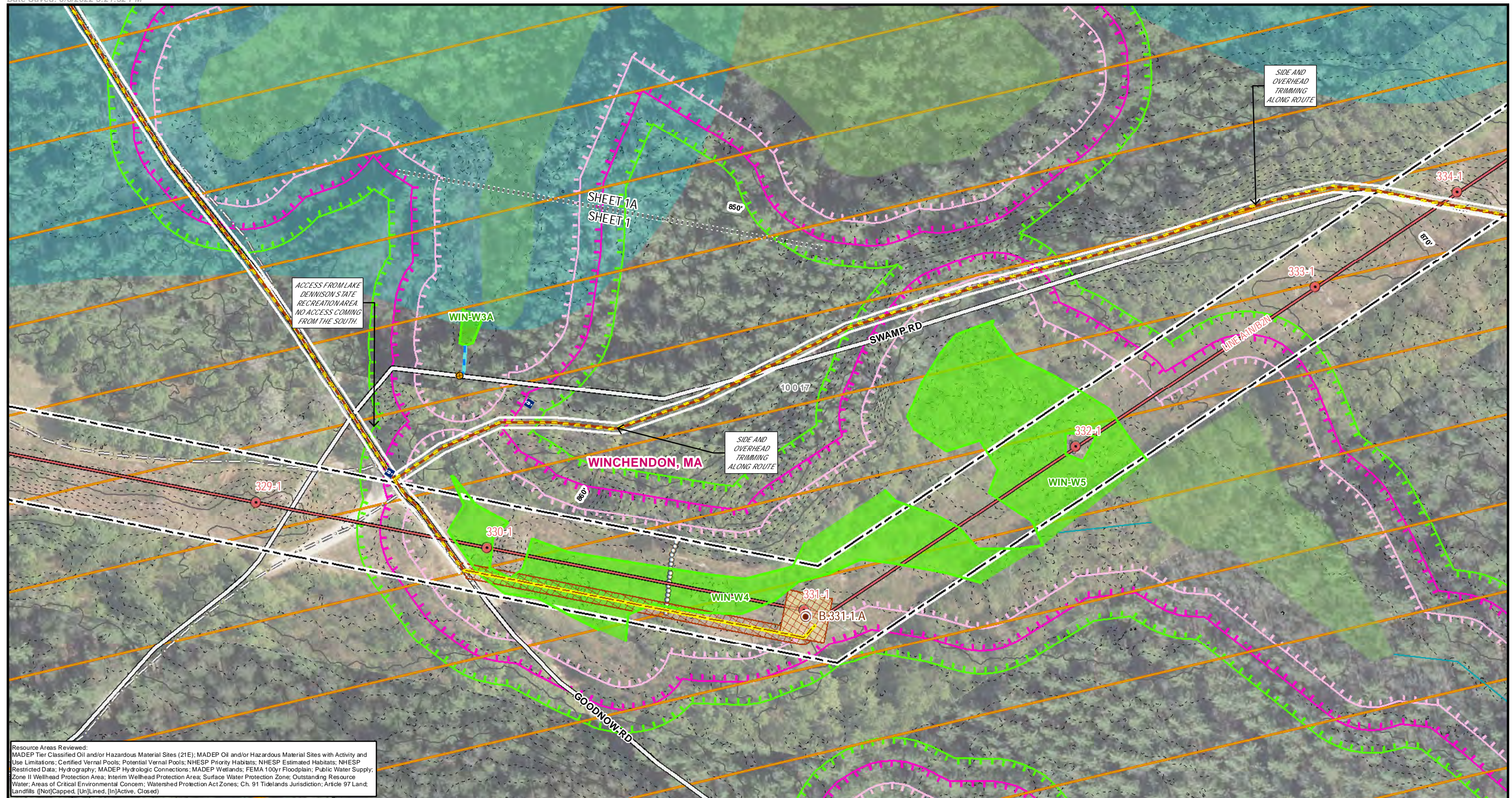
A1/B2 TRANSMISSION LINE GEOTECHNICAL SOIL BORING PROGRAM

Environmental Resources Map

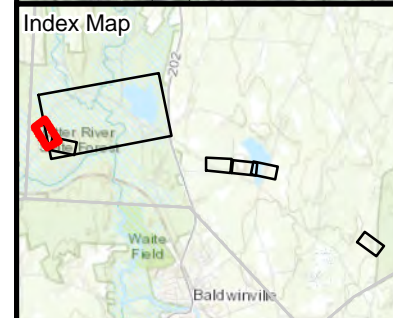
Winchendon, MA
 Page 1A of 6

Imagery Source:
 National Grid FY22 Imagery
 VT 2019 Aerial Imagery
 NH GRANIT 2015 Aerial Imagery
 MA MassGIS 2021 Aerial Imagery





Resource Areas Reviewed:
 MADEP Tier Classified Oil and/or Hazardous Material Sites (21E); MADEP Oil and/or Hazardous Material Sites with Activity and Use Limitations; Certified Vernal Pools; Potential Vernal Pools; NHESP Priority Habitats; NHESP Estimated Habitats; NHESP Restricted Data; Hydrography; MADEP Hydrologic Connections; MADEP Wetlands; FEMA 100yr Floodplain; Public Water Supply; Zone II Wellhead Protection Area; Interim Wellhead Protection Area; Surface Water Protection Zone; Outstanding Resource Water; Areas of Critical Environmental Concern; Watershed Protection Act Zones; Ch. 91 Tidelands Jurisdiction; Article 97 Land; Landfills (NotCapped, [Un]Lined, [In]Active, Closed)



Legend		Access Type		State Streams		Parcel Boundary		Article 97 Lands	
	Soil Boring Location		Preferred Access		State Streams		Parcel Boundary		Municipal
	Existing Structure		OffROW Preferred Access		State Wetlands*		Hiking Trails		Municipal
	Existing OH Line		Alternate Access		State Open Water*		Gate		Municipal
	Approx ROW		OffROW Alternate		50ft No Disturbance Zone		Fence		Municipal
	Construction Matting		Delineated Top of Bank		75ft No Build Zone		Stonewall		Municipal
	Work Envelope*		Delineated Stream Centerline		100ft Buffer to Wetlands & Streams		Guardrail		Municipal
	Establish New Access		Delineated Open Water		200ft Riverfront Area		Culvert		Municipal
	Modifications to Existing Access		Delineated Wetland Edge		FEMA 100yr Floodplain*		2ft Contour		Municipal
	No Modifications		Delineated Wetland Area*		NHESP Priority & Estimated Habitats		10ft Contour		Municipal

A1/B2 TRANSMISSION LINE GEOTECHNICAL SOIL BORING PROGRAM

Environmental Resources Map

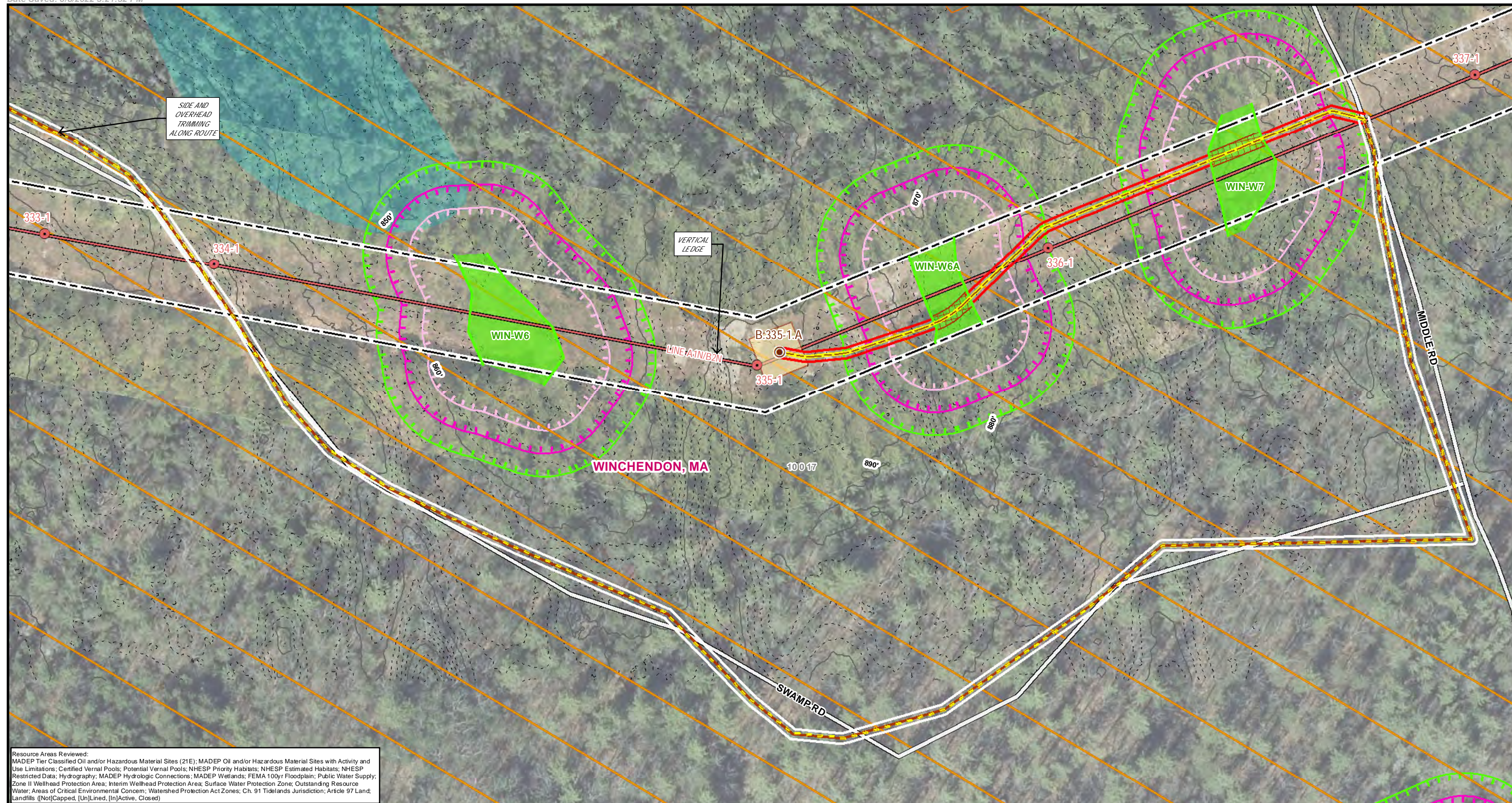
Winchendon, MA
Page 1 of 6

1 inch = 100 feet

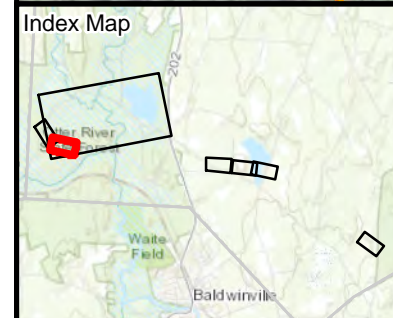
Feet

*Indicates Layers Set to Transparency

Imagery Source:
 National Grid FY22 Imagery
 VT 2019 Aerial Imagery
 NH GRANIT 2015 Aerial Imagery
 MA MassGIS 2021 Aerial Imagery



Resource Areas Reviewed:
 MADEP Tier Classified Oil and/or Hazardous Material Sites (21E); MADEP Oil and/or Hazardous Material Sites with Activity and Use Limitations; Certified Vernal Pools; Potential Vernal Pools; NHESP Priority Habitats; NHESP Estimated Habitats; NHESP Restricted Data; Hydrography; MADEP Hydrologic Connections; MADEP Wetlands; FEMA 100yr Floodplain; Public Water Supply; Zone II Wellhead Protection Area; Interim Wellhead Protection Area; Surface Water Protection Zone; Outstanding Resource Water; Areas of Critical Environmental Concern; Watershed Protection Act Zones; Ch. 91 Tidelands Jurisdiction; Article 97 Landfills (NotCapped, UnLined, InActive, Closed)



Legend		Access Type		State Resources		Other Features	
Soil Boring Location	Preferred Access	State Streams	Parcel Boundary	State Wetlands*	Article 97 Lands	Hiking Trails	Municipal
Existing Structure	OffROW Preferred Access	State Open Water*	Gate	50ft No Disturbance Zone	Fence	Stone wall	Guardrail
Existing OH Line	Alternate Access	75ft No Build Zone	Stone wall	100ft Buffer to Wetlands & Streams	Stone wall	Stone wall	Stone wall
Approx ROW	OffROW Alternate	200ft Riverfront Area	Stone wall	200ft Riverfront Area	Stone wall	Stone wall	Stone wall
Construction Matting	Delineated Top of Bank	Delineated Open Water	Stone wall	Delineated Open Water	Stone wall	Stone wall	Stone wall
Work Envelope*	Delineated Stream Centerline	Delineated Wetland Edge	Stone wall	Delineated Wetland Edge	Stone wall	Stone wall	Stone wall
Establish New Access	Delineated Stream Centerline	Delineated Wetland Area*	Stone wall	Delineated Wetland Area*	Stone wall	Stone wall	Stone wall
Modifications to Existing Access	Delineated Stream Centerline	FEMA 100yr Floodplain*	Stone wall	FEMA 100yr Floodplain*	Stone wall	Stone wall	Stone wall
No Modifications	Delineated Stream Centerline	NHESP Priority & Estimated Habitats	Stone wall	NHESP Priority & Estimated Habitats	Stone wall	Stone wall	Stone wall

A1/B2 TRANSMISSION LINE GEOTECHNICAL SOIL BORING PROGRAM

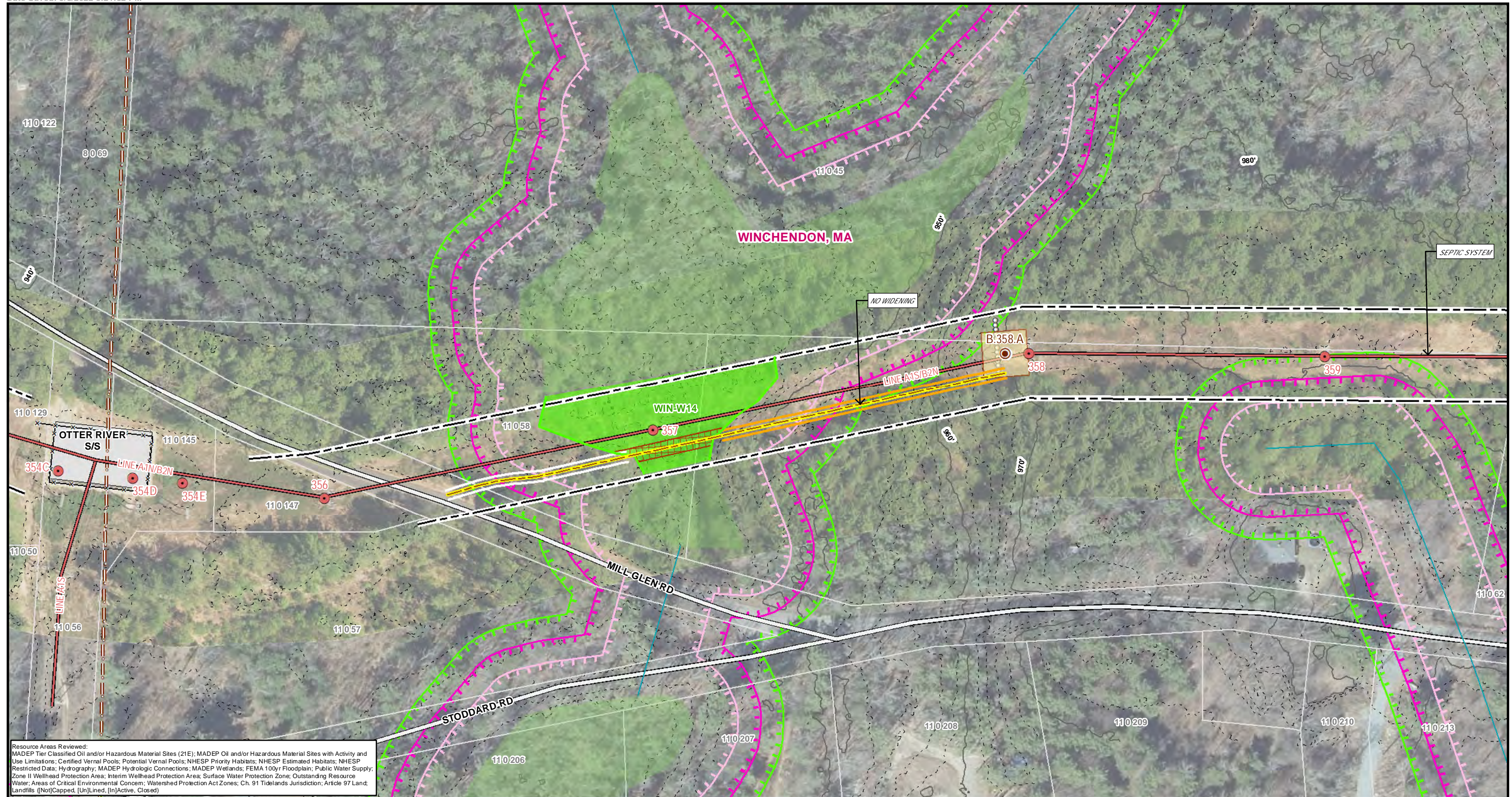
Environmental Resources Map

Winchendon, MA
 Page 2 of 6

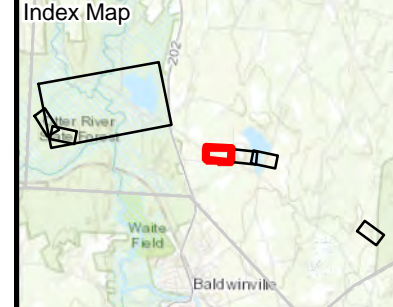
Imagery Source:
 National Grid FY22 Imagery
 VT 2019 Aerial Imagery
 NH GRANIT 2015 Aerial Imagery
 MA MassGIS 2021 Aerial Imagery

1 inch = 100 feet

*Indicates Layers Set to Transparency



Resource Areas Reviewed:
 MADEP Tier Classified Oil and/or Hazardous Material Sites (21E); MADEP Oil and/or Hazardous Material Sites with Activity and Use Limitations; Certified Vernal Pools; Potential Vernal Pools; NHESP Priority Habitats; NHESP Estimated Habitats; NHESP Restricted Data; Hydrography; MADEP Hydrologic Connections; MADEP Wetlands; FEMA 100yr Floodplain; Public Water Supply; Zone II Wellhead Protection Area; Interim Wellhead Protection Area; Surface Water Protection Zone; Outstanding Resource Water; Areas of Critical Environmental Concern; Watershed Protection Act Zones; Ch. 91 Tidelands Jurisdiction; Article 97 Land Landfills (NotCapped, [Un]Lined, [In]Active, Closed)



<p>Legend</p> <ul style="list-style-type: none"> ● Soil Boring Location ● Existing Structure — Existing OH Line — Approx ROW ▨ Construction Matting ▨ Work Envelope* <p>Access Scope</p> <ul style="list-style-type: none"> ▨ Establish New Access ▨ Modifications to Existing Access ▨ No Modifications 	<p>Access Type</p> <ul style="list-style-type: none"> ▨ Preferred Access ▨ OffROW Preferred Access ▨ Alternate Access ▨ OffROW Alternate ▨ Delineated Top of Bank ▨ Delineated Stream Centerline ▨ Delineated Open Water ▨ Delineated Wetland Edge ▨ Delineated Wetland Area* 	<ul style="list-style-type: none"> — State Streams — State Wetlands* — State Open Water* — 50ft No Disturbance Zone — 75ft No Build Zone — 100ft Buffer to Wetlands & Streams — 200ft Riverfront Area — FEMA 100yr Floodplain* ▨ NHESP Priority & Estimated Habitats 	<ul style="list-style-type: none"> ▨ Parcel Boundary ▨ Article 97 Lands — Hiking Trails ▨ Gate — Fence — Stonewall — Guardrail — Culvert — 2ft Contour — 10ft Contour
---------------------------------------------------------------------------------------------------------------------------------------------------------------------------------------------------------------------------------------------------------------------------------------------------------------------------------------------------------------------------------------------------------------------	-----------------------------------------------------------------------------------------------------------------------------------------------------------------------------------------------------------------------------------------------------------------------------------------------------------------------------------------------------------------------------	---------------------------------------------------------------------------------------------------------------------------------------------------------------------------------------------------------------------------------------------------------------------------------------------------------------------------------------------------------------------	-----------------------------------------------------------------------------------------------------------------------------------------------------------------------------------------------------------------------------------------------------------------------

**A1/B2 TRANSMISSION LINE
 GEOTECHNICAL SOIL BORING PROGRAM**

Environmental Resources Map



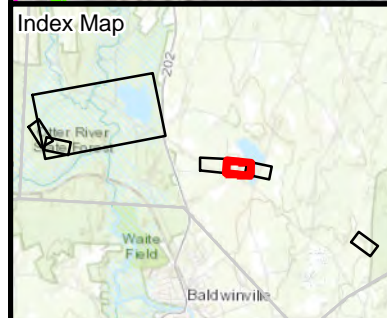
Winchendon, MA
 Page 3 of 6

Imagery Source:
 National Grid FY22 Imagery
 VT 2019 Aerial Imagery
 NH GRANIT 2015 Aerial Imagery
 MA MassGIS 2021 Aerial Imagery

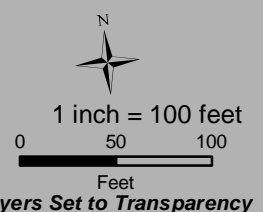




Resource Areas Reviewed:
 MADEP Tier Classified Oil and/or Hazardous Material Sites (21E); MADEP Oil and/or Hazardous Material Sites with Activity and Use Limitations; Certified Vernal Pools; Potential Vernal Pools; NHESP Priority Habitats; NHESP Estimated Habitats; NHESP Restricted Data; Hydrography; MADEP Hydrologic Connections; MADEP Wetlands; FEMA 100yr Floodplain; Public Water Supply; Zone II Wellhead Protection Area; Interim Wellhead Protection Area; Surface Water Protection Zone; Outstanding Resource Water; Areas of Critical Environmental Concern; Watershed Protection Act Zones; Ch. 91 Tidelands Jurisdiction; Article 97 Landfills (Not Capped, Unlined, In Active, Closed)



Legend		Access Type		State Streams		Parcel Boundary		Article 97 Lands	
	Soil Boring Location		Preferred Access		State Streams		Parcel Boundary		Article 97 Lands
	Existing Structure		OffROW Preferred Access		State Wetlands*		Hiking Trails		Municipal
	Existing OH Line		Alternate Access		State Open Water*		Gate		
	Approx ROW		OffROW Alternate		50ft No Disturbance Zone		Fence		
	Construction Matting		Delineated Top of Bank		75ft No Build Zone		Stonewall		
	Work Envelope*		Delineated Stream Centerline		100ft Buffer to Wetlands & Streams		Guardrail		
	Establish New Access		Delineated Open Water		200ft Riverfront Area		Culvert		
	Modifications to Existing Access		Delineated Wetland Edge		FEMA 100yr Floodplain*		2ft Contour		
	No Modifications		Delineated Wetland Area*		NHESP Priority & Estimated Habitats		10ft Contour		

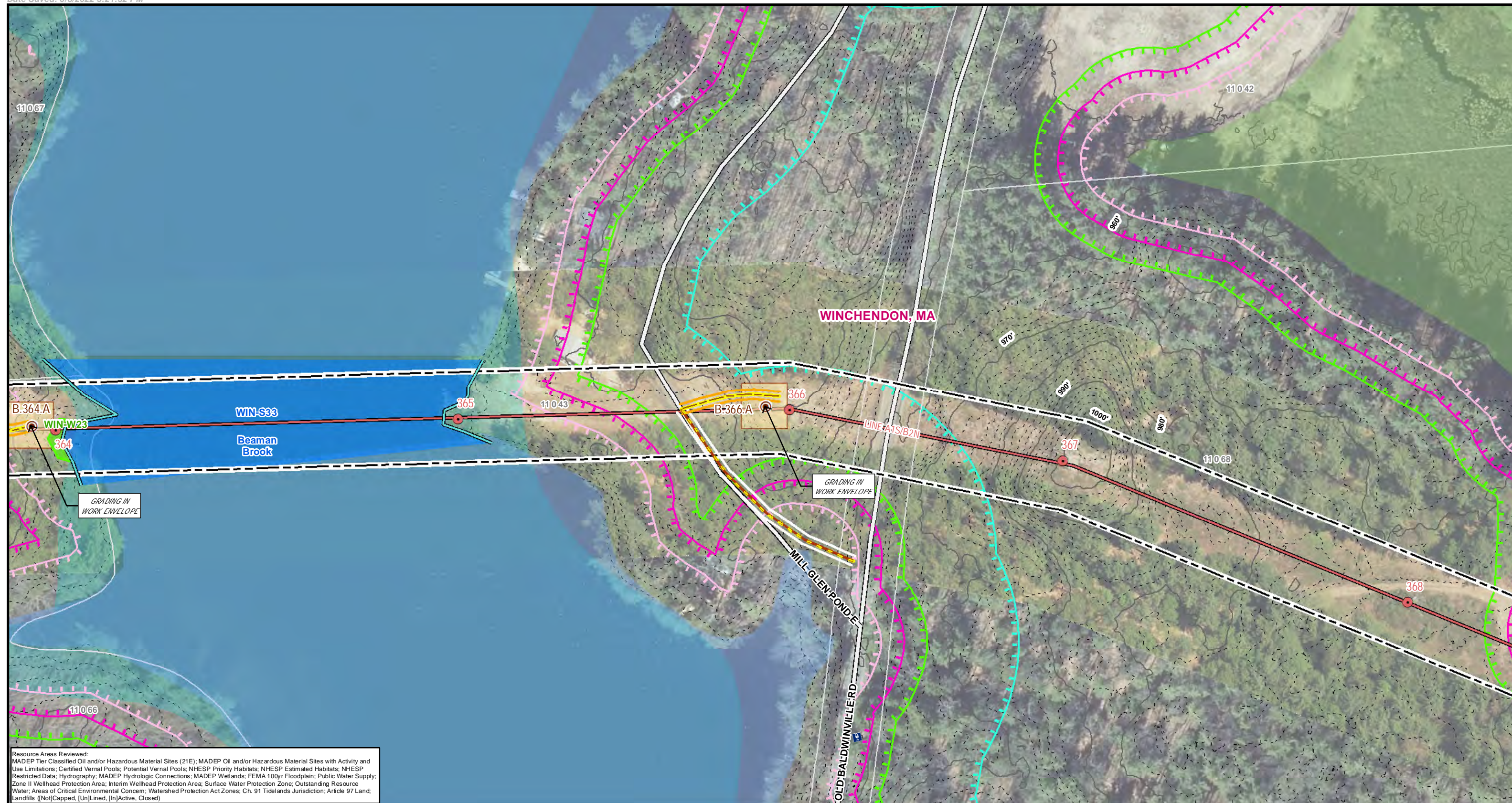


A1/B2 TRANSMISSION LINE GEOTECHNICAL SOIL BORING PROGRAM

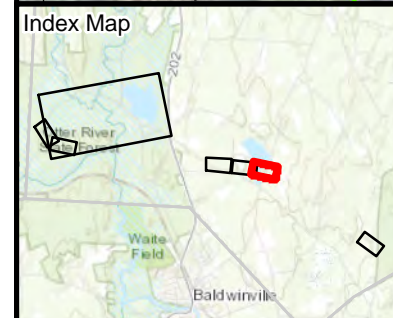
Environmental Resources Map

Winchendon, MA
 Page 4 of 6

Imagery Source:
 National Grid FY22 Imagery
 VT 2019 Aerial Imagery
 NH GRANIT 2015 Aerial Imagery
 MA MassGIS 2021 Aerial Imagery



Resource Areas Reviewed:
 MADEP Tier Classified Oil and/or Hazardous Material Sites (21E); MADEP Oil and/or Hazardous Material Sites with Activity and Use Limitations; Certified Vernal Pools; Potential Vernal Sites; NHESP Priority Habitats; NHESP Estimated Habitats; NHESP Restricted Dates; Hydrography; MADEP Hydrologic Connections; MADEP Wetlands; FEMA 100yr Floodplain; Public Water Supply; Zone II Wellhead Protection Area; Interim Wellhead Protection Area; Surface Water Protection Zone; Outstanding Resource Water; Areas of Critical Environmental Concern; Watershed Protection Act Zones; Ch. 91 Tidelands Jurisdiction; Article 97 Land; Landfills (NotCapped, UnLined, InActive, Closed)



Legend		Access Type		State Resources		Parcel Boundary		Article 97 Lands	
	Soil Boring Location		Preferred Access		State Streams		Parcel Boundary		Municipal
	Existing Structure		OffROW Preferred Access		State Wetlands*		Hiking Trails		Municipal
	Existing OH Line		Alternate Access		State Open Water*		Gate		Municipal
	Approx ROW		OffROW Alternate		50ft No Disturbance Zone		Fence		Municipal
	Construction Matting		100ft Buffer to Wetlands & Streams		75ft No Build Zone		Stonewall		Municipal
	Work Envelope*		Delineated Top of Bank		100ft Buffer to Wetlands & Streams		Guardrail		Municipal
	Establish New Access		Delineated Stream Centerline		200ft Riverfront Area		Culvert		Municipal
	Modifications to Existing Access		Delineated Open Water		FEMA 100yr Floodplain*		2ft Contour		Municipal
	No Modifications		Delineated Wetland Edge		NHESP Priority & Estimated Habitats		10ft Contour		Municipal
	Delineated Wetland Area*								

A1/B2 TRANSMISSION LINE GEOTECHNICAL SOIL BORING PROGRAM

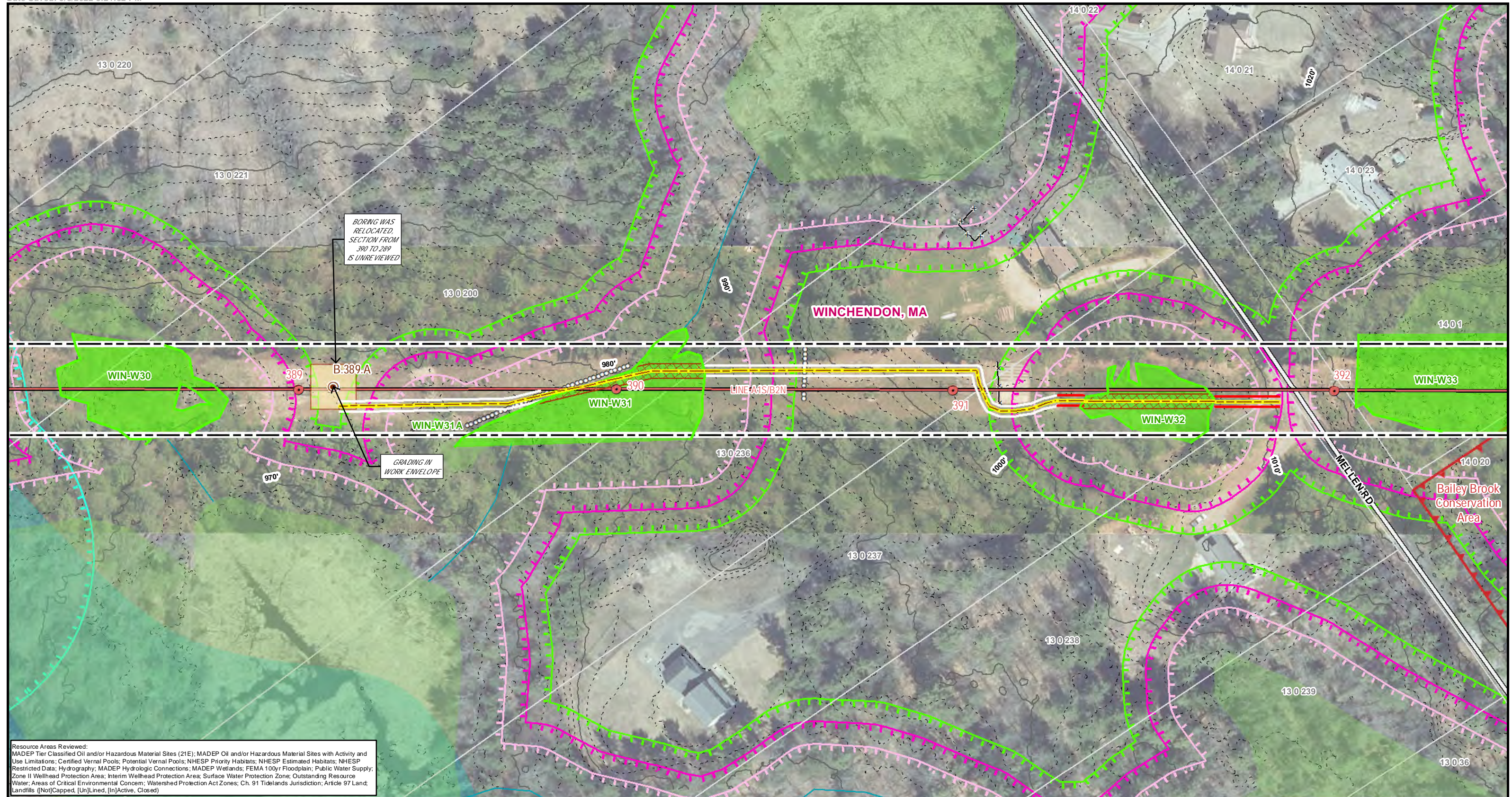
Environmental Resources Map

Winchendon, MA
Page 5 of 6

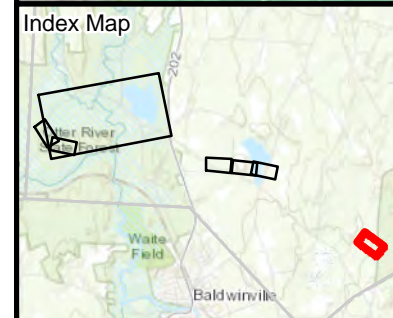
1 inch = 100 feet
0 50 100
Feet

*Indicates Layers Set to Transparency

Imagery Source:
 National Grid FY22 Imagery
 VT 2019 Aerial Imagery
 NH GRANIT 2015 Aerial Imagery
 MA MassGIS 2021 Aerial Imagery



Resource Areas Reviewed:
 MADEP Tier Classified Oil and/or Hazardous Material Sites (21E); MADEP Oil and/or Hazardous Material Sites with Activity and Use Limitations; Certified Vernal Pools; Potential Vernal Pools; NHESP Priority Habitats; NHESP Estimated Habitats; NHESP Restricted Data; Hydrography; MADEP Hydrologic Connections; MADEP Wetlands; FEMA 100yr Floodplain; Public Water Supply; Zone II Wellhead Protection Area; Interim Wellhead Protection Area; Surface Water Protection Zone; Outstanding Resource Water; Areas of Critical Environmental Concern; Watershed Protection Act Zones; Ch. 91 Tidelands Jurisdiction; Article 97 Landfills (NotCapped, [Un]Lined, [In]Active, Closed)



Legend		Access Type		State Streams		Parcel Boundary		Article 97 Lands	
	Soil Boring Location		Preferred Access		State Streams		Parcel Boundary		Municipal
	Existing Structure		OffROW Preferred Access		State Wetlands*		Hiking Trails		Municipal
	Existing OH Line		Alternate Access		State Open Water*		Gate		Municipal
	Approx ROW		OffROW Alternate		50ft No Disturbance Zone		Fence		Municipal
	Construction Matting		100ft Buffer to Wetlands & Streams		75ft No Build Zone		Stonewall		Municipal
	Work Envelope*		Delineated Top of Bank		100ft Buffer to Wetlands & Streams		Guardrail		Municipal
	Establish New Access		Delineated Stream Centerline		200ft Riverfront Area		Culvert		Municipal
	Modifications to Existing Access		Delineated Open Water		FEMA 100yr Floodplain*		2ft Contour		Municipal
	No Modifications		Delineated Wetland Edge		NHESP Priority & Estimated Habitats		10ft Contour		Municipal
			Delineated Wetland Area*						

A1/B2 TRANSMISSION LINE GEOTECHNICAL SOIL BORING PROGRAM

Environmental Resources Map

Winchendon, MA
Page 6 of 6

1 inch = 100 feet

Feet

*Indicates Layers Set to Transparency

Imagery Source:
 National Grid FY22 Imagery
 VT 2019 Aerial Imagery
 NH GRANIT 2015 Aerial Imagery
 MA MassGIS 2021 Aerial Imagery