



Exterior Wall Finishes			
I.D.	Manufacturer	Description	Comments
E1	Sto Corp.	Exterior Insulation and Finish System	Nimbus 1465
E3.1	Nichha	5/8" Woodgrain, Fiber Cement Cladding with 5/8" Clip (JE778)	VintageWood Color: Custom Light Grey
E5	Ref Specs	Prefinished metal panel	Neon Red
E6	Ref Specs	Prefinished metal parapet cap	Bone White

Glazing Types	
Type	Description
Type A	1" Tinted, Low-Emissivity, Coated, Tempered, Insulating, Laminated
Type B	5/16" Tinted, Laminated Safety Glass
Type C	1" Tinted, Low-Emissivity, Coated, Insulating Glass
Type E	1" Tinted, Low-Emissivity, Coated, Insulating, Laminated Glass

**Walgreens**

STORE PLANNING + DESIGN DEVELOPMENT  
106 WILMOT ROAD  
DEERFIELD, IL 60015-5105

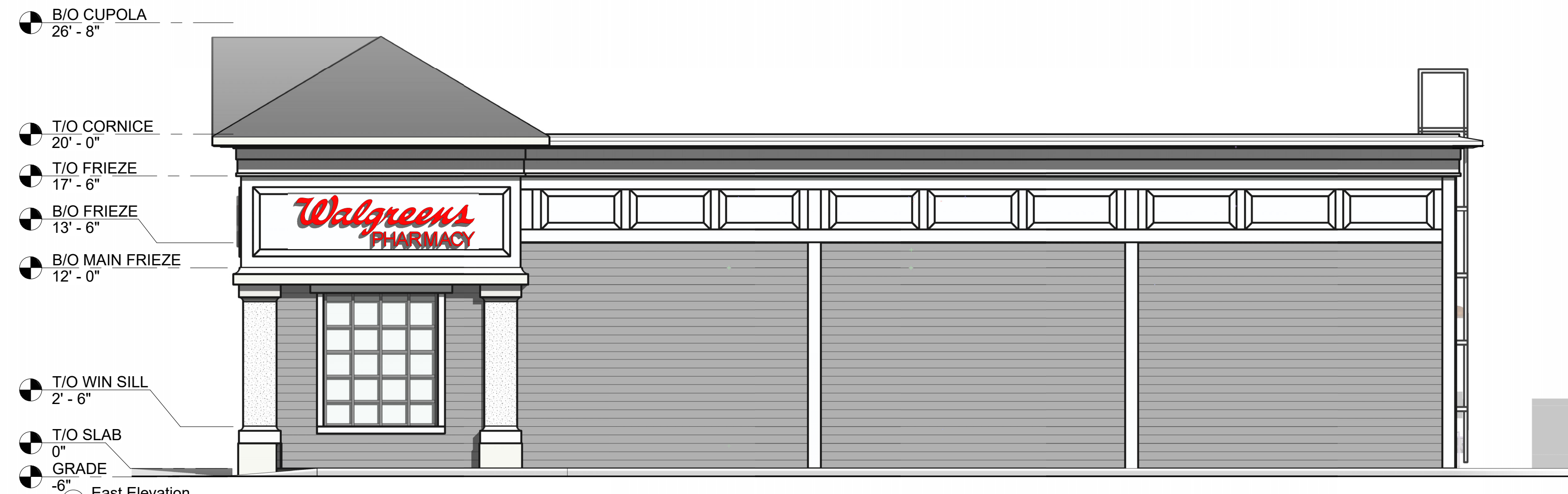
I HEREBY CERTIFY THAT THIS PLAN AND SPECIFICATION WAS PREPARED BY ME OR UNDER MY SUPERVISION AND THAT I AM A DULY REGISTERED ARCHITECT OR ENGINEER UNDER THE LAWS OF THE STATE OF ILLINOIS. AS SIGNIFIED BY MY HAND AND SEAL.



LINGLE DESIGN GROUP, INC.  
158 W. MAIN ST.  
LENA, IL 61048  
815-369-9155  
1764 BLAKE ST.  
DEERFIELD, IL 60015  
803-974-5873  
WWW.LINGLEDESIGN.COM



1 South Elevation  
3/16" = 1'-0"



3 East Elevation  
3/16" = 1'-0"



2 North Elevation  
3/16" = 1'-0"



4 West Elevation  
3/16" = 1'-0"

NO.	DATE	BY	DESCRIPTION	REVISIONS

EXTERIOR ELEVATIONS + SIGN DATA

STORE # 17505  
**WALGREENS**  
Wichendon MA

CADD PLOT: 1/26/2022 2:17:54 PM  
DRAWN BY: J. McInnis (LDG)  
DATE: 2022.01.18  
REVIEWED: T. Wilson (LDG)

A-210