



Civil & Environmental
Consultants, Inc.

Public Meeting

Town of Winchendon
Select Board

February 26, 2024

Introduction

Presentation Overview

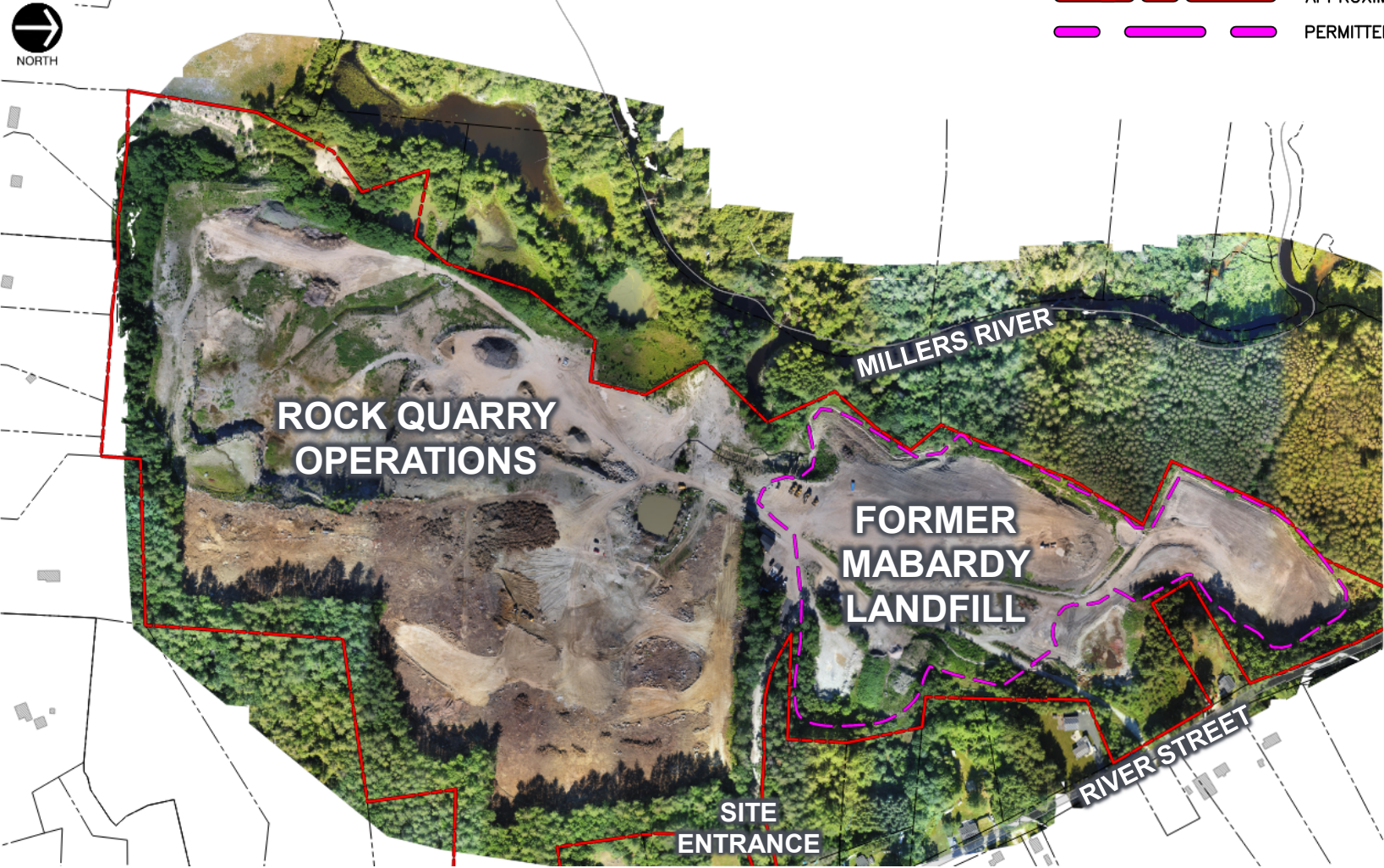
- Attendee Introductions
- Site Overview
- Future Closure Conditions
- Project Background
- Current Project Status
- Ongoing Monitoring/Oversight
- Contact Information
- Q&A



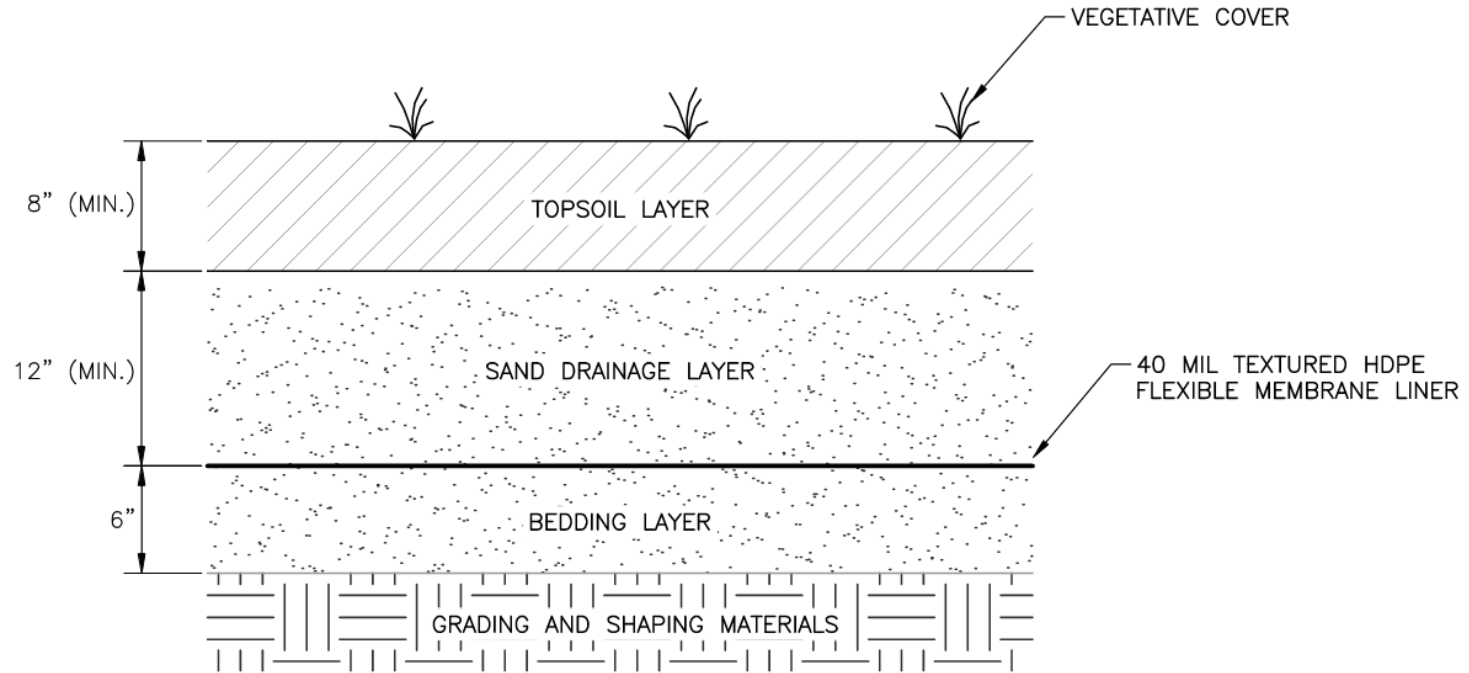
Overall Site Plan

LEGEND

- APPROXIMATE PROPERTY LINE
- PERMITTED LANDFILL LIMITS



Future Closure Conditions



1
C801

FINAL COVER SECTION

SCALE: 1"=1'



October 2022 Test Pits

LEGEND



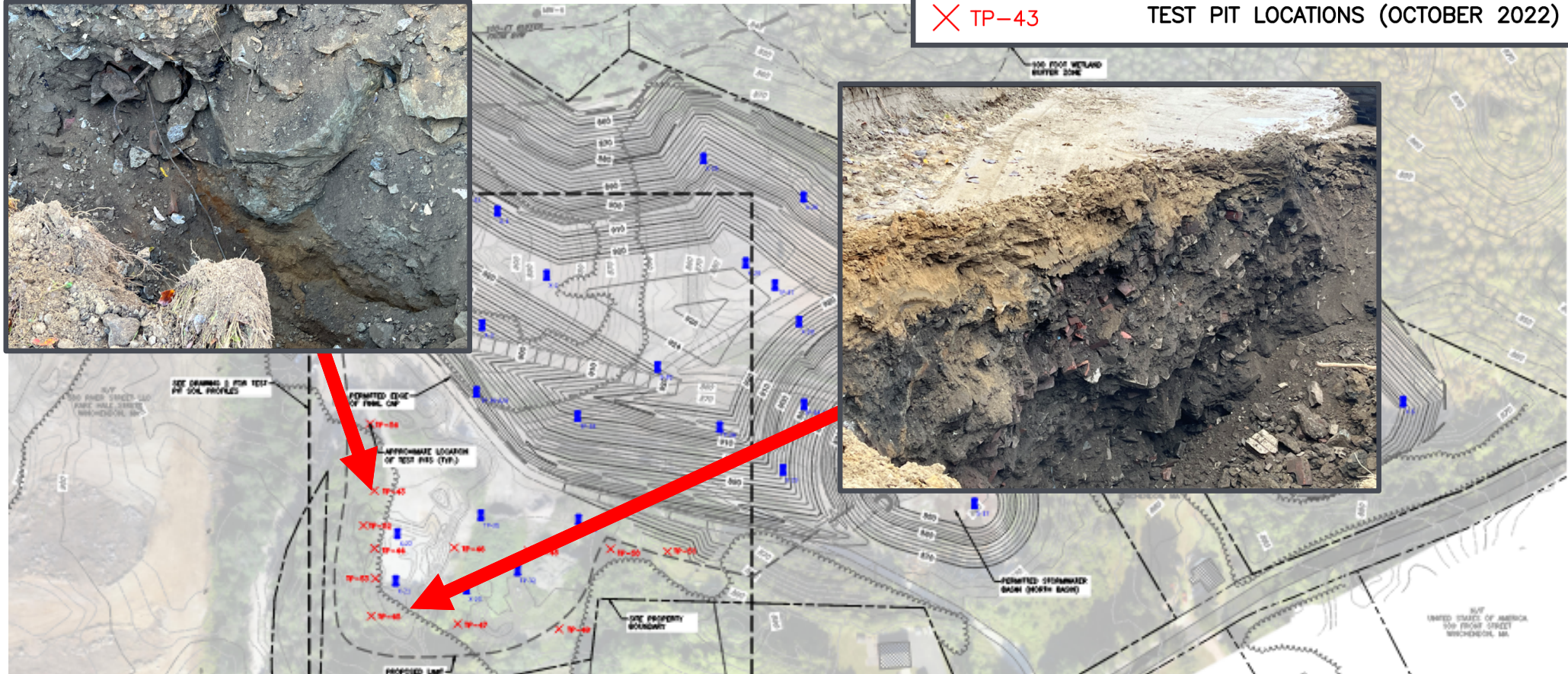
TP-33

PREVIOUS TEST PIT LOCATIONS



TP-43

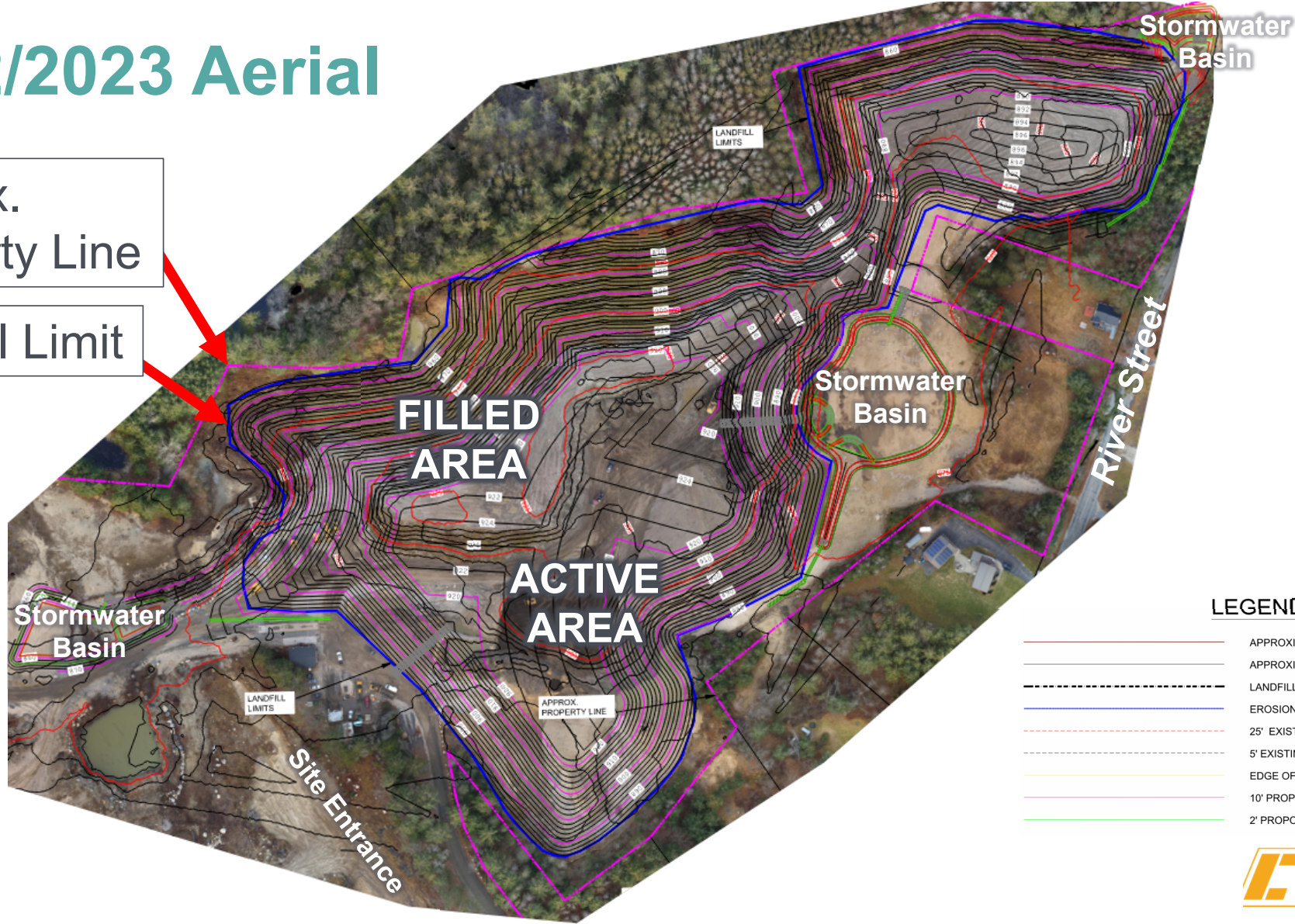
TEST PIT LOCATIONS (OCTOBER 2022)



12/12/2023 Aerial

Approx.
Property Line

Landfill Limit



LEGEND

- APPROXIMATE PROPERTY LINE
- APPROXIMATE ABUTTERS LINE
- - - LANDFILL LIMITS
- EROSION CONTROL LIMITS
- - - 25' EXISTING CONTOUR LINE
- - - 5' EXISTING CONTOUR LINE
- EDGE OF GRAVEL ROAD
- 10' PROPOSED CONTOUR LINE
- 2' PROPOSED CONTOUR LINE



Ongoing Monitoring/Oversight

- Material Testing
- Third-party Monthly Inspections
- Routine Environmental Monitoring
- Monthly/Quarterly Soil Tracking



Contact Information / Q&A

Kyle Hampton, CEC

Project Manager

Office: 774-501-2176

Email: khampton@cecinc.com

Jarrett Everton, WL French

Environmental Manager

Office: 978-600-2125

Email: jeverton@wlfrench.com

Jon Kitchen, CEC

Principal, LSP

Office: 774-501-2176

Email: jkitchen@cecinc.com

Joe McManus, WL French

General Superintendent

Office: 978-663-2623

Email: jmcmanus@wlfrench.com

