



Civil & Environmental
Consultants, Inc.

Public Hearing

Town of Winchendon
Zoning Board of Appeals

February 28, 2024

Introduction

Presentation Overview

- Attendee Introductions
- Site Overview
- Site History
- Permit History
- Permit Application
- Contact Information
- Q&A

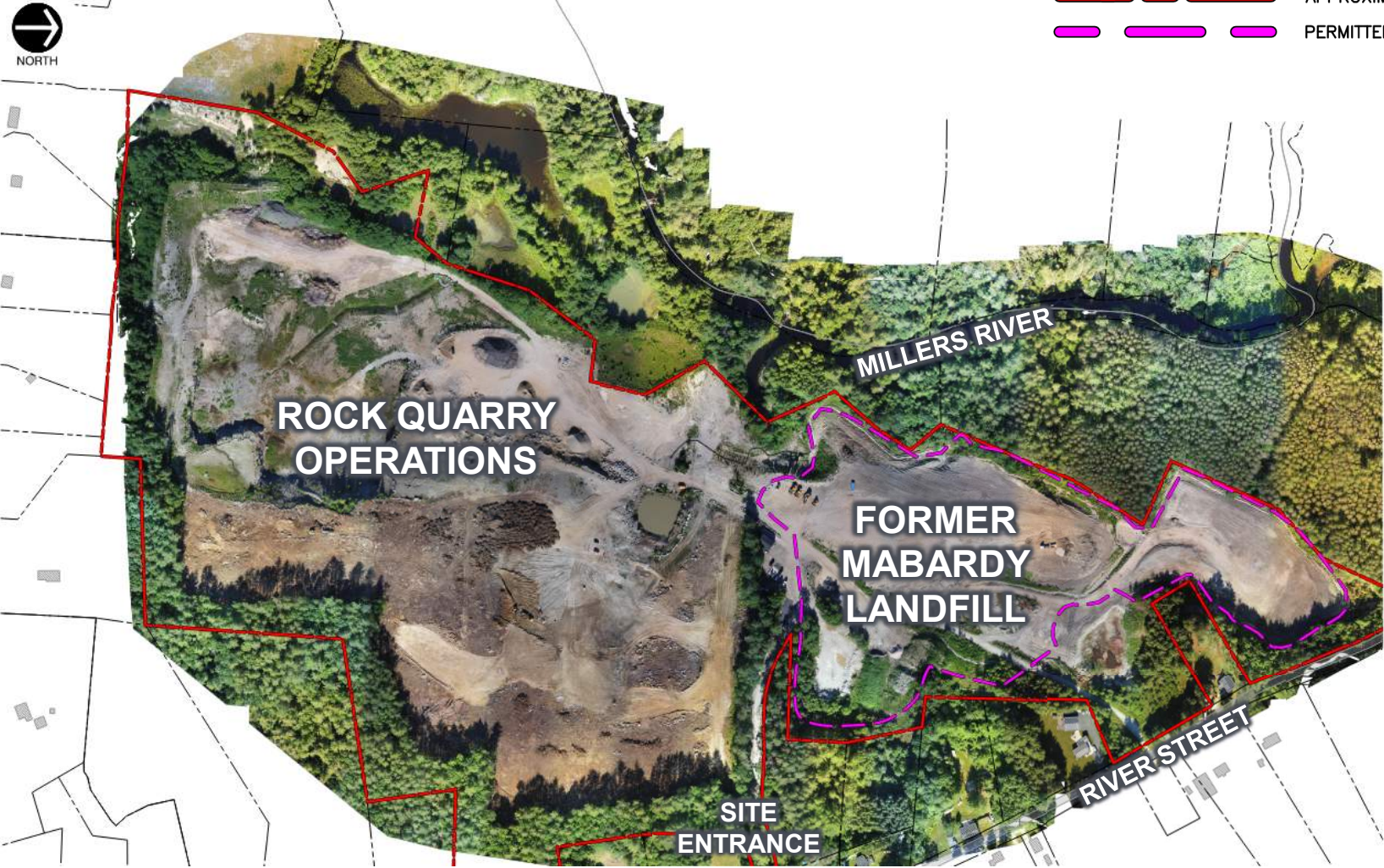


Overall Site Plan



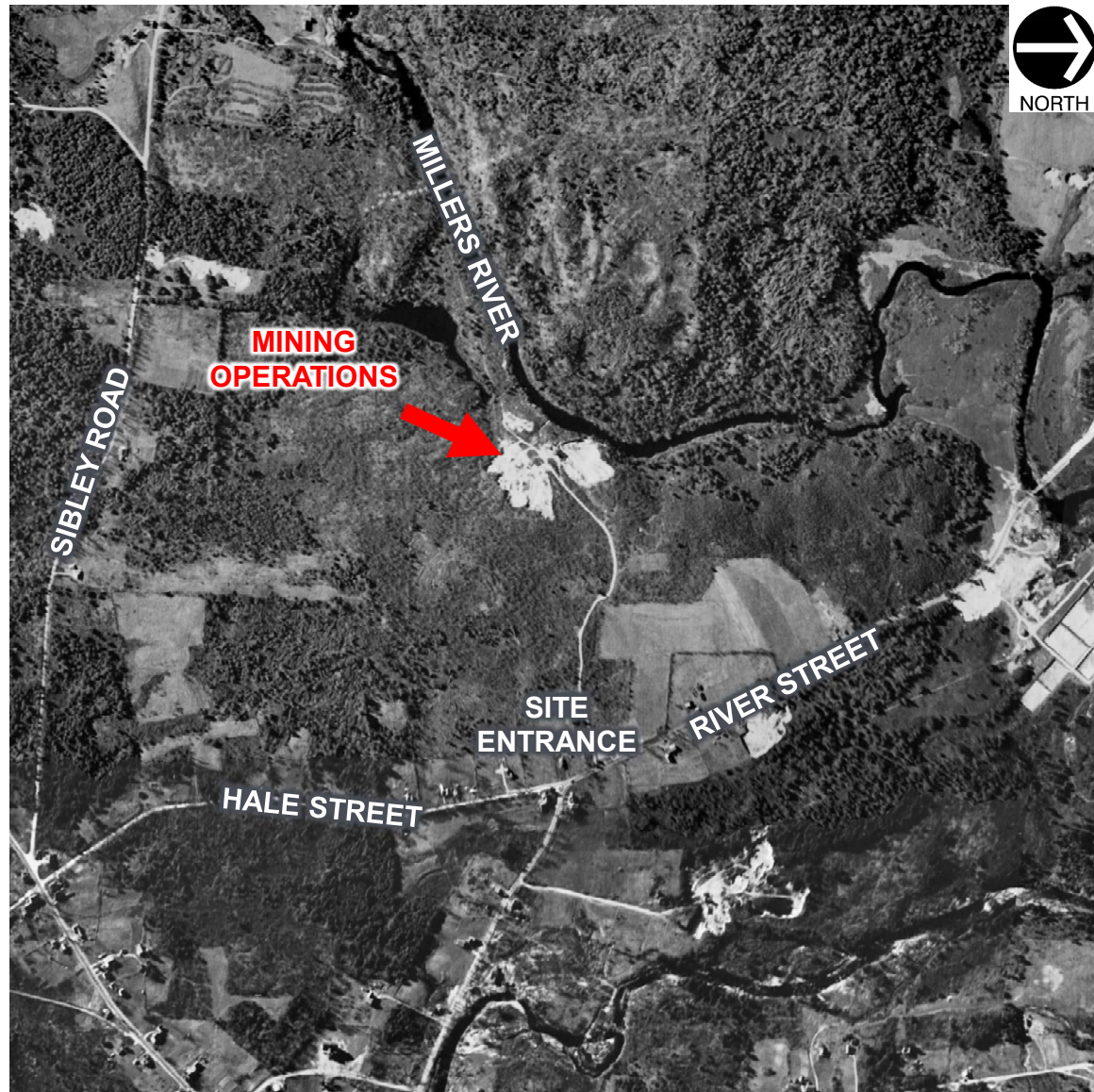
LEGEND

- APPROXIMATE PROPERTY LINE
- PERMITTED LANDFILL LIMITS



Site History

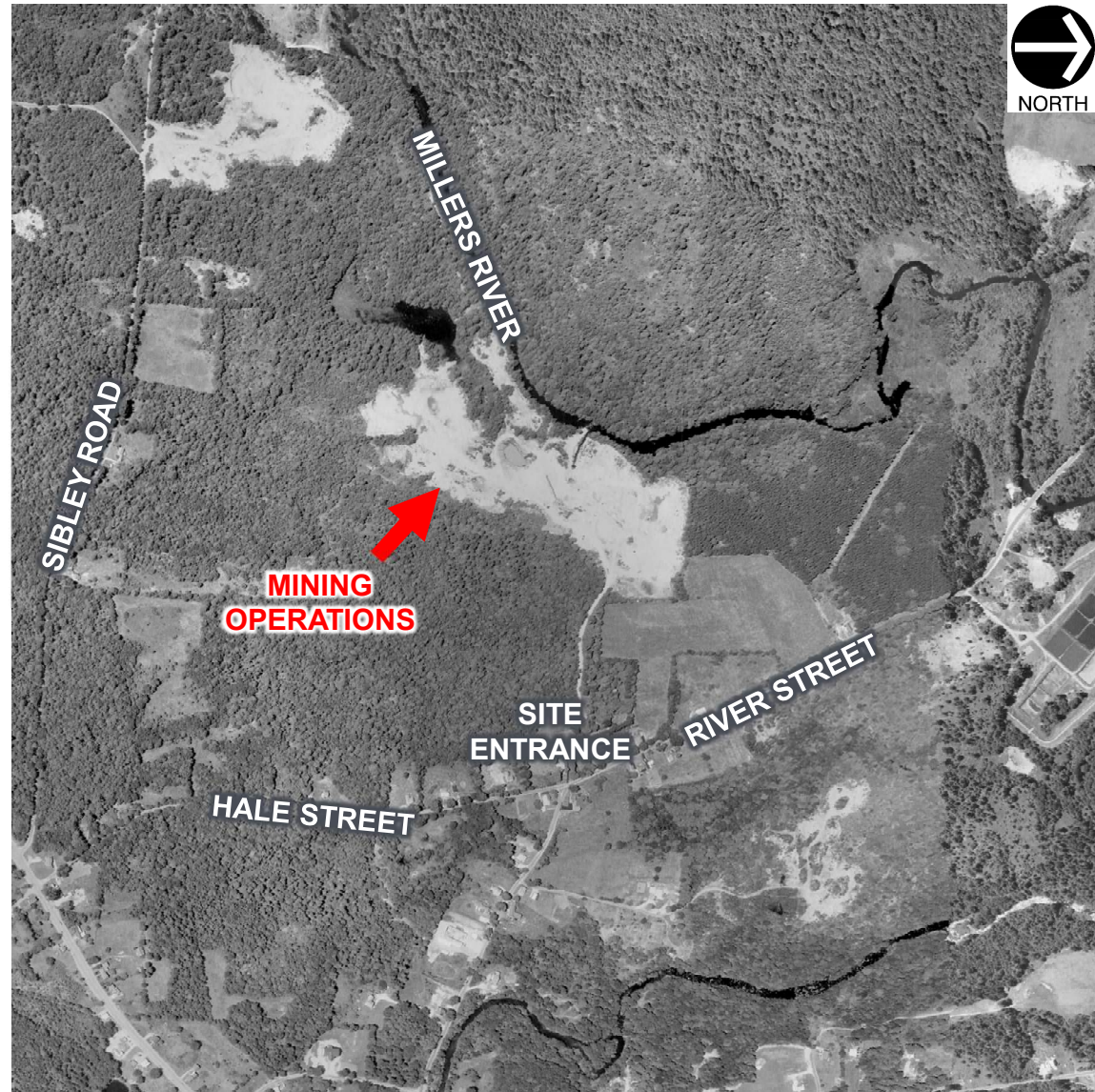
1938 Aerial Photo



Aerial image obtained from Nationwide Environmental Title Research, LLC ("NETROnline"). <https://www.historicaerials.com/>. Accessed February 2024

Site History

1971 Aerial Photo



Aerial image obtained from Nationwide Environmental Title Research, LLC ("NETROnline"). <https://www.historicaerials.com/>. Accessed February 2024

Site History

2000 Aerial Photo





Aerial image obtained from Google Earth, referenced to MassGIS Commonwealth of Massachusetts EOE. Imagery Date 12/31/2000. Accessed February 2024



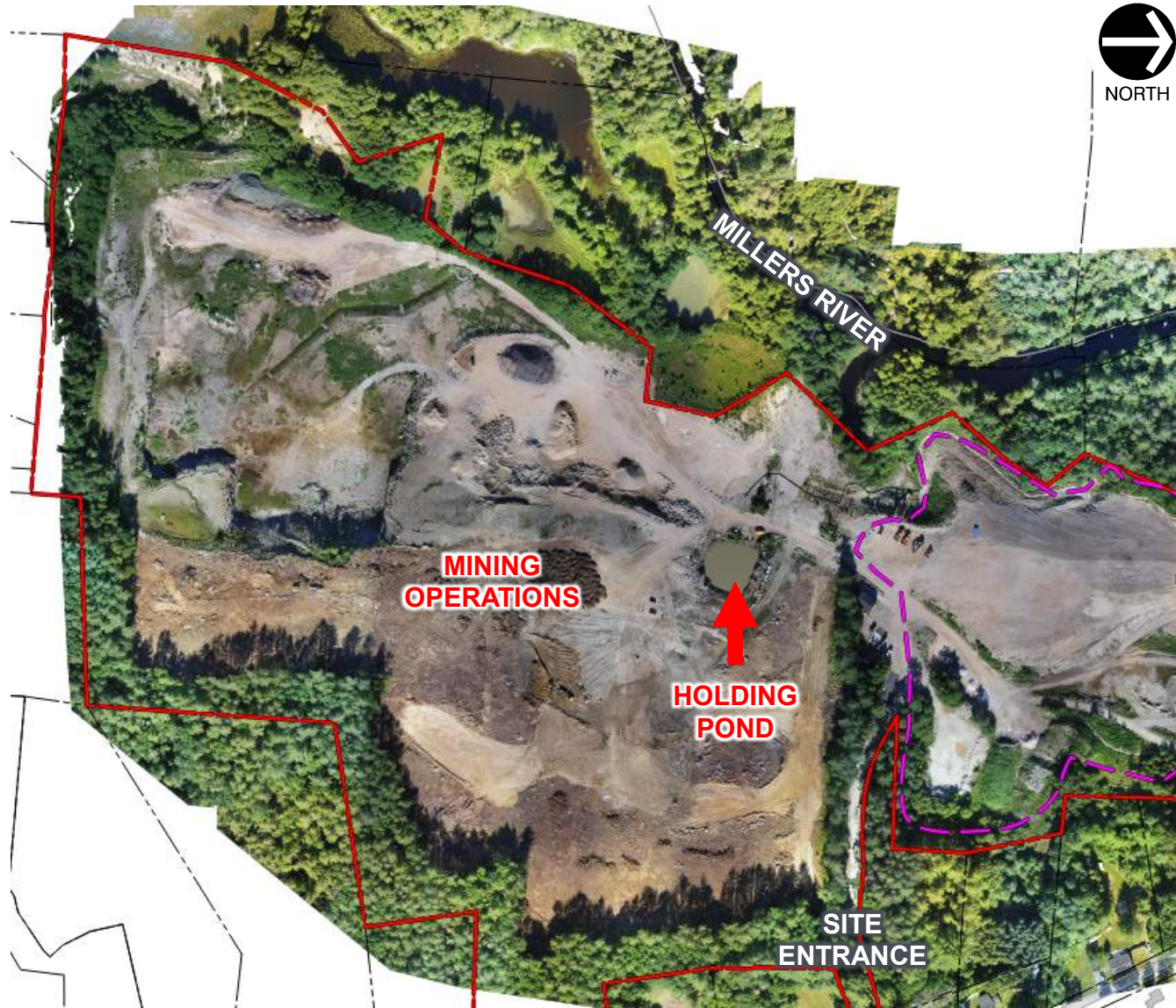
Site History

2021 Aerial Photo

LEGEND

-  APPROXIMATE PROPERTY LINE
-  PERMITTED LANDFILL LIMITS

Aerial image provided by WL French. Imagery Date 2021.



Permit History

1989

1996

1998

1999

2008

January 6, 1989

ZBA issues
Special Permit to
C.J. Mabardy

January 23, 1989

ZBA decision was
appealed



Permit History

1989

1996

1998

1999

2008

March 20, 1996

Land Court dismisses
appeal of the 1989
Special Permit



Permit History

1989

1996

1998

1999

2008

December 2, 1998

Building Commissioner
issued decision to
cease operations

July 21, 1999

ZBA overturned the
commissioner's
decision



Permit History

1989

1996

1998

1999

2008

November 18, 2008

ZBA issued 10-year
renewal of Special
Permit



Permit Application

Contents of Application

- Permit Renewal
 - Special Permit expires on March 8, 2024
 - Requesting 10-year extension
- Permit Modification
 - Increase allowable trucking from 64 to 75 per day



Contact Information / Q&A

Kyle Hampton, CEC

Project Manager

Office: 774-501-2176

Email: khampton@cecinc.com

Jarrett Everton, WL French

Environmental Manager

Office: 978-600-2125

Email: jeverton@wlfrench.com

Jon Kitchen, CEC

Principal, LSP

Office: 774-501-2176

Email: jkitchen@cecinc.com

Joe McManus, WL French

General Superintendent

Office: 978-663-2623

Email: jmcmanus@wlfrench.com

