

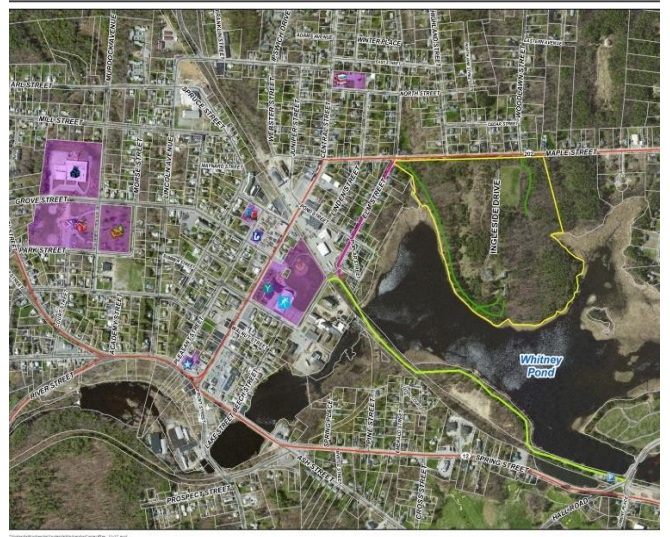
Winchendon Enhancement Committee Presents:

“A VISION FOR THE FUTURE”

LEARN ABOUT INGLESIDE!!!

What is Ingleside?

Ingleside is a parcel of land off Maple Street measuring 43.1 acres with frontage on Whitney Pond. It contains three buildings: a large home, a large two story barn and a multi-car garage. It is currently owned by the Winchendon School, a private school, that would like to see the Town of Winchendon acquire this parcel of land for the benefit of the Town.



Why invest in Ingleside?

It is a one-of-a-kind “gem” located just off of Central Street and right in the heart of the downtown Winchendon business district. It is near the existing walking path and is the only centralized property that holds such potential for the Town and her residents. A grant has been received from the Robinson-Broadhurst Foundation to develop a plan and budget for the redevelopment and operation of Ingleside as well as to begin to engage community members in this work.

What can Ingleside do for Winchendon?

The possibilities are endless... With outdoor space containing open fields, forest land, wetlands and lake front access; Ingleside could be used for environmental education, recreational and physical activities

To name a few:

- ~Community Vegetable and Flower Gardens
- ~Skate Park
- ~Picnic Areas
- ~Soccer Field
- ~Athletic Fields
- ~Boat Launch for Kayaks and Canoes
- ~Fishing, Fishing Instruction and Fishing Derbies
- ~Playgrounds
- ~Outdoor Concerts
- ~Wildlife Habitats i.e. Bird, Bat and Duck Houses
- ~Extension to Town's Pathway w/Exercise Stations
- ~An Area for Events

And there is so much more...

With the available indoor space, Ingleside could be used for additional educational, skill building, recreational and physical activities.

To name a few:

- ~Art Classes and Studios
- ~Music Classes and Jam Sessions
- ~Woodworking
- ~Metalworking
- ~Crafts
- ~Robotics, Information Technology
- ~Dance and Exercise Classes
- ~Meeting Space

What will your involvement in the Ingleside Project ultimately mean?

It will mean an opportunity for the entire community, every generation, to come together and participate in the creation and use of community operated recreation areas and collaborative workspaces where people can meet to play, socialize, learn and work together. It will also mean a level of reliable activity, pride and interest in the area that will draw visitors to the Town and be a basis for business activity and economic development.

Winchendon Enhancement Committee

Established in 2013 after a community forum hosted by the Robinson-Broadhurst Foundation and attended by 118 representatives from 56 businesses, organizations and Town departments. From this forum, those in attendance were asked to submit a list of the greatest challenges facing the youth and citizens of the Town of Winchendon. The WEC was selected by Robinson-Broadhurst and tasked with identifying the most common challenges submitted and creating a viable solution to resolve as many as possible. The WEC, wholeheartedly, believes that the first step in the process is the acquisition of the Ingleside property by the Town from the Winchendon School. Once the property is owned by the Town, it can be developed into the visions and wishes of the entire community, along with programs to address the challenges unearthed at the community forum. The activities and programs highlighted herein will forever change the Winchendon Community in a positive way not only for this generation, but for the many to follow

WEC Members: 2015 -David Romanowski, Linda Daigle, John Deline, Jane LaPointe, Pastor J. Lillie, Ken LaBrack, Steve Haddad, Don O'Neil, Kris Provost

Winchendon Enhancement Committee

For questions or additional information

E-mail: info@enhancewinchendon.org

Or log on to: www.facebook.com/WinchEnhCol